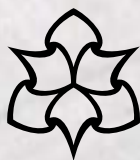


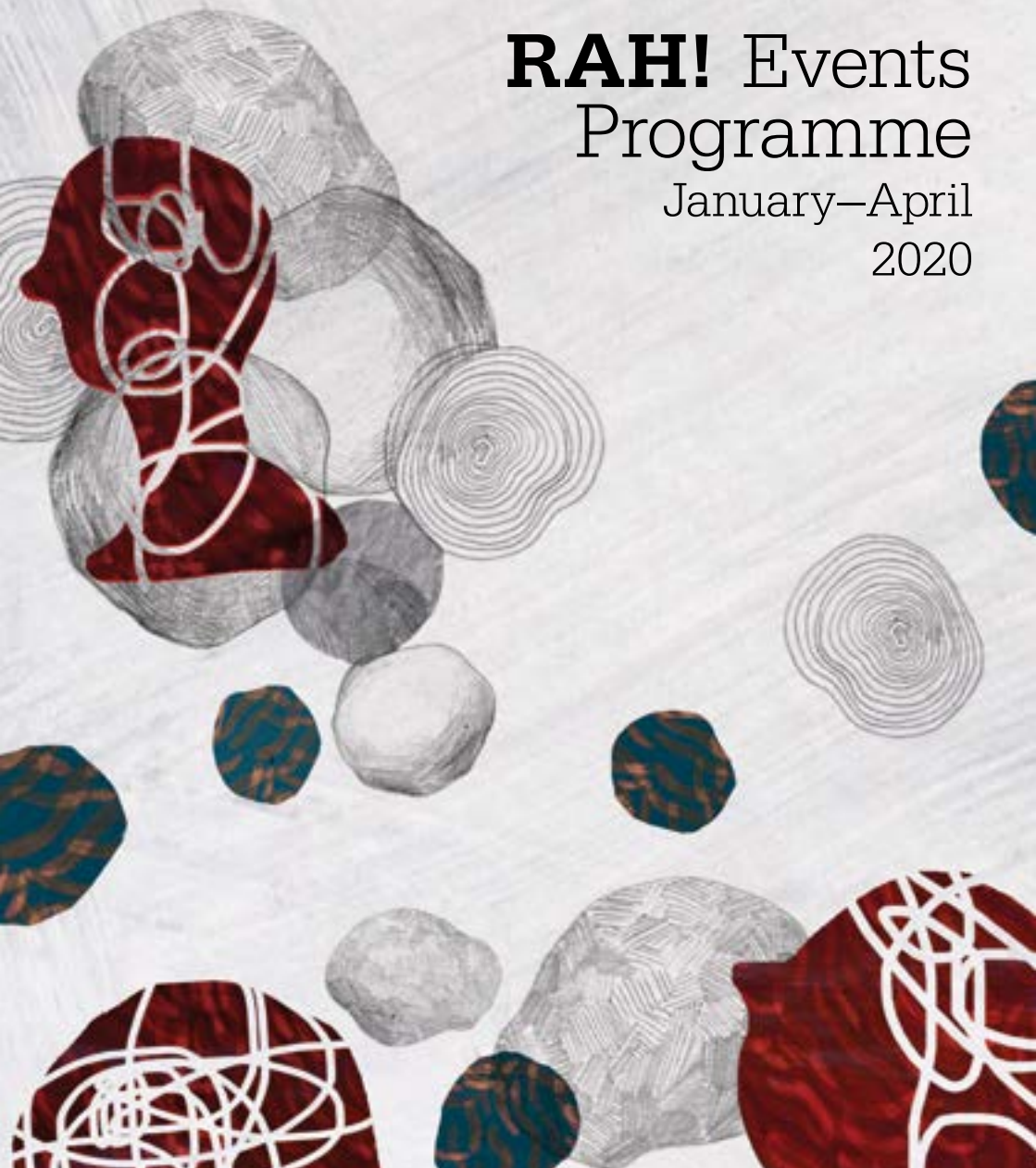
**RAH!** Research in Arts  
and Humanities at  
Manchester Met



Manchester  
Metropolitan  
University

# RAH! Events Programme

January–April  
2020



# Contents

Key Faculty Events	4	Live Action Roleplaying Games	30
The RAH! Podcast	5	Pencil Puzzles	31
<b>School of Architecture</b>		Games and the Internet of Things	31
International Pursuit of Modernism	6	Regulating Virtual Bodies	32
Future Mobility Symposium	7	<b>History</b>	
<b>School of Art</b>		LGBTQ+ Histories	33
Weavers Factory Tile Showcase	8	Sport, Order and Control	33
Magic Carpet	9	Recognising Wilgefortis	34
Adeela Suleman	10	Regendering the Tetrarchy	35
Curious Things	11	Forgotten Places in the British Home	35
Textile and Place	12	As Seen on Screen	36
<b>Classical Association</b>		<b>Philosophy</b>	
Fake Latin Inscriptions	13	Asceticism and Ethics	37
Castration Envy	14	Levinas on Solitude and Art	38
Classics and Storytelling	14	Race in the History of Philosophy	38
<i>Cleft Lip</i> (2018)	15	Philosophical Art History	39
<b>Crime and Justice Film Fest</b>		<b>Politics and International Relations</b>	
Learning Fair	17	Citizen Participation 2.0	40
<i>Scum</i> (1979)	18	Smart Cities' Environmental Dreams	41
<i>American Psycho</i> (2000)	18	Romanticising the New Silk Road	42
<i>Shoplifters</i> (2018)	19	Welfare Reform in Russia & Belarus	43
<b>English</b>		Pain: Alienation & Discursive Abuse	44
My Dear Mr Ruskin	21	<b>SUAB</b>	
History of Gothic Cinema	22	Responding to Drug Related Deaths	45
Ruskin, Ecology and Creativity	23	Annual European Conference	45
<b>Writing School</b>		<b>Centre for Youth Studies</b>	
Writing Competition Gala	24	Europe and the Child	46
Rachel Mann and Karen Solie	25	<b>Cross Faculty</b>	
Jack Sprackland Book Launch	25	Postgraduate Conference	47
Love Writing Series Launch	26	<b>Professorial Inauguration Lectures</b>	
Ella Duffy and Andrew McMillan	27	Professor Kristina Niedderer	48
<b>Game Studies Network</b>		Professor Sarah Galvani	50
Games and Public Engagement	28	Professor Lloyd Strickland	51
Playing Cleopatra	29		

# Introduction

**RAH! (Research in Arts and Humanities) is the public engagement programme of the Faculty of Arts and Humanities at Manchester Metropolitan University.**

**RAH! will present a rolling programme of events on a range of topics, disciplines and research areas from across the faculty throughout the academic year.**

Launching in 2017, RAH! built on the enormous success of our 'Humanities in Public' (HiP) Festival, which ran from 2013 – 2017.

The 2019/20 program will showcase everything public-facing and research-based within the Faculty of Arts and Humanities at Manchester Met University. Our research seeks to make a real difference to people's lives.

**This year, we have organised our events by subject, so everybody can find something they are interested in.**

**The program will include:**

- Public lectures and seminars
- Film screenings
- Art exhibitions
- Conferences
- Readings and author events
- And much more!

You can find tickets and further details at our website:

**[www.mmu.ac.uk/rah](http://www.mmu.ac.uk/rah)**

Additional events will be added after the publication of this brochure so please check the website for more events!

---

**RAH!** Research in Arts  
and Humanities at  
Manchester Met

---

# Key Faculty Events

**The Arts and Humanities Faculty at Manchester Met is home to several areas of world-leading and internationally excellent research and we pride ourselves on our innovation in teaching and learning.**

Our research areas include Architecture (Manchester School of Architecture), Art, Media and Design (Manchester School of Art); Humanities, Languages and Social Science; and Fashion (Manchester Fashion Institute).

We are proud to present a series of key faculty events below:

## **Professorial Inauguration Lecture Series**

The inaugural lectures provide an opportunity for our most prolific and successful researchers to update us on their current projects and future research plans, and to share their research insights with the wider public. All lectures are free and open to all. For more details, please go to page 48 or visit [mmu.ac.uk/rah/inaugural-lectures](http://mmu.ac.uk/rah/inaugural-lectures)

All inaugural lectures will take part in the Geoffrey Manton building from 5.30pm – 7.30pm.

### **Professor Kristina Niedderer**

*Professor of Design at Manchester School of Art*

**Date:** Monday 13th January 2020

### **Professor Sarah Galvani**

*Professor of Social Research and Substance Use*

**Date:** Monday 3rd February 2020

### **Professor Lloyd Strickland**

*Professor of Philosophy and Intellectual History*

**Date:** Monday 23rd March 2020

### **Professor Gideon Koppel**

*Professor of Media at Manchester School of Art*

**Date:** Monday 11th May 2020

### **Professor Ashwin Kumar**

*Professor of Social Policy*

**Date:** Monday 15th June 2020

## **Legacy 4**

*Legacy exhibition captures the evolution of art and design practices beyond graduation from across a variety of disciplines and generations.*

**Date:** 15th – 30th January 2020

**Location:** Benzie Building

For more details, please visit [art.mmu.ac.uk/events/2020/legacy-4](http://art.mmu.ac.uk/events/2020/legacy-4)

## **Images of Research 2020: Flair, Ambition and Enthusiasm**

**Date:** 24th February – 20th March 2020

**Location:** Benzie Building

For more details, please visit [mmu.ac.uk/research/research-study/events/images](http://mmu.ac.uk/research/research-study/events/images)

## **Beyond Babel Multilingual Film Festival**

*A film festival that aims to celebrate multilingual life, showcase a wide range of films, share discussions on film aesthetics, and broaden the visibility of multilingual communities on screen.*

**Date:** May 2020

**Location:** Number 70 and Instituto Cervantes

For more details, visit the RAH! website.

## **Global Studies Association (GSA) conference**

*'Global-Disconnections and Alternative Futures.'*

**Date:** 11th – 12th June 2020

**Location:** Geoffrey Manton Building

For more details, please visit [bit.ly/GSAConference2020](http://bit.ly/GSAConference2020)

## **Children and Youth Speaking Up and Speaking Out**

*The third biennial conference of the Children's History Society.*

**Date:** 25th – 27th June 2020

**Location:** Geoffrey Manton Building

For more details, please visit <http://bit.ly/children-and-youth-2020>

## **English: Shared Futures 2020**

*Celebrating and exploring the intellectual strength, diversity, and creativity of English language, literature, and creative writing in the UK and across the world.*

**Date:** 26th – 28th June 2020

**Location:** Manchester/Salford

For more details, please visit [englishsharedfutures.uk](http://englishsharedfutures.uk)

## **Manchester Writing School**

Many of our writers will be taking part in panels and delivering workshops throughout the year. For more details, please visit [manchesterschoolofwriting.co.uk](http://manchesterschoolofwriting.co.uk)

## **Manchester Game Studies Network**

The Manchester Game Studies Network (MSGN) have a range of events throughout the year. For more details, please visit [manchestergamestudies.org](http://manchestergamestudies.org)



# The RAH! Podcast



## Research to shout about!

In April 2019, we launched The RAH! Podcast at Manchester Met. Released on a monthly basis, each episode covers a different topic inspired by research specialisms here within the Faculty of Arts and Humanities at Manchester Metropolitan University. The episode topics range the entirety of the faculty so there really is something for everyone!

Current episodes include:

- LGBTQ+ Politics and Religion
- The Manchester Game Studies Network
- Place Writing
- Perceiving Brexit
- Music and Sonic Studies
- Thread Bearing Witness

Listen to the Podcast on SoundCloud here:



[soundcloud.com/mmu\\_rah\\_podcast](https://soundcloud.com/mmu_rah_podcast)

Follow the Podcast on Spotify here: [bit.ly/RAHPodcast](https://bit.ly/RAHPodcast)



---

# EVENTS IN Manchester School of Architecture

---

Manchester School of Architecture is an innovative collaboration between Manchester Metropolitan University and the University of Manchester.

Our research groups fall broadly into three thematic areas: Built Heritage, Urban Futures and Citizen Engagement. Find out more at [msa.ac.uk](http://msa.ac.uk)

---

MANCHESTER SCHOOL  
OF ARCHITECTURE

---

## The International Pursuit of Modernism in Britain

---

*Organised by staff and students  
at the Manchester School  
of Architecture*

**Date:** 9th – 25th January 2020

**Time:** 11am – 5pm

**Location:** Gallery Space, upstairs at  
The Modernist Society, 58 Port St,  
Manchester M1 2EQ

**Tickets:** Free –  
See RAH! website for further details

To celebrate the 100 year anniversary of the Bauhaus in Germany, Year one undergraduate architecture students have prepared an exhibition of modern houses during their Humanities studies. The exhibition unites models and drawings of the iconic Bauhaus' Master's houses in Dessau, Germany, designed by Walter Gropius with models of houses in London designed by architects associated with the Bauhaus School or the British Modern Architectural Research Group, (MARS) Group, who were connected to Congrès

internationaux d'architecture moderne (CIAM). Collectively they demonstrate the progression of architectural style through an understanding of modern materials and construction techniques. The exhibition will highlight the international links between the groups and the designers' individual contributions to the evolution of modernism in architecture. The exhibition will open at The Modernist Society's Manchester headquarters in January 2020, it is free to visit is open to the public.



*Exhibition Image Group 4 Student Model*



WESTFIELD LDNPA

---

# Future Mobility Symposium 2020

---

*Manchester School of Architecture in partnership with Transport for Greater Manchester*

**Date:** Tuesday 14th January 2020

**Time:** 2pm – 6pm

**Location:** Benzie Building, Higher Ormond Street, Manchester, M15 6BG

**Tickets:** Free – See the RAH! website for further details

As part of the Innovate UK Government funded Centre for Connected Autonomous Vehicles (CCAV 2) project 'SYNERGY', the Complexity Planning and Urbanism Lab (CPU-Lab) at the Manchester School of Architecture in partnership with Transport for Greater Manchester (TfGM) is organising the Future Mobility Symposium 2020 in Manchester.

This half-day event is planned around Connected Autonomous Vehicles (CAVs), to explore their potentials, pitfalls, government policies, current projects and research conducted in this area. The event will include a panel of experts from industry, academia and government to discuss issues and share their views around the implementation of the technology, upcoming projects, policy work and potential concerns. This event will feature a number of provocations from experts in the field followed by a round-table discussion leading to a published public report.

The provocations and discussion will revolve around the following themes:

- Disruption to existing services
- Benefits (for mobility)
- Risks
- Urban Transformation / Changes required to City Infrastructure

---

# EVENTS FROM Manchester School of Art

---

The Manchester School of Art is the second oldest design school in Britain. We are an innovator of art and design education in the UK, and celebrated our 180th anniversary in 2018. Manchester School of Art covers: Manchester School of Architecture, Department of Art and Performance, Department of Design and Department of Media. Find out more at: [art.mmu.ac.uk](http://art.mmu.ac.uk)

MANCHESTER  
SCHOOL OF ART

---

## Weavers Factory Textile Showcase

---



Still from film by Flanders Tapestry

**Date:** Friday 24th January 2020 –  
Tuesday 4th February 2020

**Time:** Open 10am – 4pm  
every day but Monday

**Location:** The Weavers Factory,  
13 New St, Uppermill,  
Oldham OL3 6AU

**Tickets:** Free – Just turn up!

*Organised by staff and students from the  
Manchester School of Art*

A showcase of 3 Textiles in Practice  
graduates from 2019 at the Weavers  
Factory in Upper Mill.

The inaugural Weavers Factory Textile  
Showcase Prize was awarded to  
Manchester Metropolitan University  
students Hannah Sheldon, Meghan  
Ditchfield and Warren Davies. The prize  
is a two-week textile showcase at the  
Weavers Factory in January 2020 with  
the opportunity to create a textile design  
inspired by the Joan Charnley archive for  
the 2021 Joan Charnley collection.



# #MagicCarpet: Of wandering and weaving, of digits and the digital, of craft and craftiness.

---

*A tapestry by Dr Kai Syng Tan, Senior Lecturer at the Department of Art & Performance*

**Exhibition dates:**

30th January –  
4th March 2020

**Public opening hours:**

10am – 5.30pm,  
Monday – Saturday

**Public View:** Thursday

30th January 2020,  
6pm – 8pm

**Panel Discussion:**

Thursday 5th March 2020,  
6pm – 8pm

**Location:** Manchester Craft and Design Centre, 17 Oak St Manchester M4 5JD

**Tickets:** Free – Just turn up!

Through a tapestry, film, badges and publication, we will explore the notions of:

- wandering (of the hyperactive mind and the restless body)
- weaving (of a tapestry; of ideas that clash and create new insights)
- digits (of the fingers that caress the tapestry)
- the digital (of iPad drawings; of Ada Lovelace's computer programming; of the digital Jacquard loom)
- craft (on skills, on labour)
- and craftiness (of the place of the arts today).



*Magic Carpet Dr Kai Syng Tan. Photograph by Alex Lloyd*

The public view is on the evening of 30th January. The panel discussion, chaired by Kate Day with Kai and other guests, will be held on 5th March.

All events free. All welcome, no need to book.

The exhibition is part of the award-winning art-psychiatry commission entitled *We Sat On a Mat and Had A Chat And Made Maps!* #MagicCarpet (2017-2019) was created by artist Dr Kai Syng Tan as the first artist-in-residence at the Social, Genetic and Developmental Psychiatry Centre in conversation with Professor of Psychiatry Philip Asherson, a global authority of Attention Deficit Hyperactivity Disorder (ADHD). The 18-month programme generated explored mind wandering, how that relates to the creative process and the hyperactive mind, as well as neurodiversity and how that we think differently about our different minds, bodies and beings.

# A Talk With **Adeela Suleman**

---

*Organised by Manchester School of Art researchers in visual and material culture*

**Date:** Friday 7th February 2020

**Time:** 12pm – 1pm

**Location:** LT4 Geoffrey Manton Building, Rosamond St West, Manchester M15 6LL

**Tickets:** Free – Just turn up!

Manchester School of Art with its range of researchers working in visual and material cultures welcomes Adeela Suleman to talk about her current artistic practice.

*After All Its Always Someone Else Who Dies (2017)* – Adeela Suleman. Courtesy Manchester Art Gallery  
Image: Michael Pollard

**Adeela Suleman** is a contemporary Pakistani sculptor and artist.

Her work *After All Its Always Someone Else Who Dies* is being acquired for MAG's permanent collections through the Art Fund and V&A Purchase grant. It was originally made for the exhibition *South Asian Design 2017*.

Adeela is also plays an instrumental role in Vasl Artists' Collective in Karachi. She is Head of the Fine Art Department at Indus Valley School of Art and Architecture. Her sculptural work encounters the social and political commentary created out of mundane, everyday objects.



# Curious Things: A Glimpse into the International Mail Art Archive of Michael Leigh and Hazel Jones

---

*Specially curated by Michael Leigh and Hazel Jones, Senior Lecturer at Manchester School of Art, Manchester Metropolitan University*

**Date:** 16th September 2019 – 3rd April 2020

**Time:** Monday – Friday 10am – 4pm; Saturday 12 noon – 4pm (term time only)

**Location:** Special Collections Gallery, All Saints Library, Manchester M15 6BH

**Tickets:** Free – See the RAH! website for further details

For more than forty years, artist Michael Leigh has been creating, sending, receiving and collecting Mail Art, small-scale works sent through the post. The archive he has amassed with fellow artist Hazel Jones includes worldwide correspondence with over fifty artists and encompasses envelopes, rubber stamps, zines, catalogues, badges, artistamps, artist trading cards, add to and pass on books, collaborative books and posted objects.

The archive started in the 1960s when Leigh, an art student in Manchester, began decorating the envelopes he sent to his friends in other arts schools around England with collage, rubber stampings and crude drawings. He was unaware at the time of the American artist Ray Johnson (1927-1995) who had started his New York Correspondence School and was exchanging artful gifts through the postal system with his artist friends and acquaintances.

Leigh's involvement with Mail Art grew when, in 1980, he discovered the International Mail Art Network through an exhibition at the Greenwich Theatre Gallery and was astounded to find so many like-minded individuals around the world who were exchanging art through the post. He met Hazel Jones through the mail in 1983 and their combined archive has continued to grow.

*Curious Things* features a selection of material from the archive and has been specially curated by Michael Leigh and Hazel Jones, Senior Lecturer at Manchester School of Art, Manchester Metropolitan University.



# Textile and Place 2020

---

*Hosted by Manchester School of Art*

**Date:** 23rd – 24th April 2020

**Time:** All day

**Location:** Benzie Building, Higher Ormond Street, Manchester, M15 6BG

**Tickets:** £125 General Admission / £75 Students. See the RAH! website for further details

Textile and Place 2020 explores the politics of textiles. Hosted by Manchester School of Art, the conference builds upon the debates from the first Textile and Place conference which took place in 2018. The conference explores how textiles describes and maps places through traditional methods of making, through memory and through site-specific and community-based practices. It examines how textiles carries within its fabric and in its production, the stories of trade, the transmission of histories, the crossing of cultural boundaries, of migration, and postcolonialism. We use the word politics as a broad term to indicate how textiles is implicated in particular places and is part of the relationships between groups or organisations and used to confront issues of power. Textiles can fix us to a place and also be part of the process of making change. The conference seeks to examine how textiles enables connections between sociability and communities; is a medium of protest and engages with alternative narratives; participates in economies of production, and the environment. Providing context for discussion is Manchester's rich textiles histories as well as today's political challenges which are contributing to shaping our everyday lives.

Textile and Place 2020 is a biennial international conference. In its second instalment, the event aims to carry on the discussion which begun with Textile and Place 2018. Promoting Textiles as a specialism of MSoA was one of the aims of the conference which included presentations given by members of staff who were also involved in chairing panels. A special issue of Textile: *Cloth and Culture* journal – which included selected conference proceedings (Alice Kettle introduction and Penny Macbeth's article were also part of it) was recently published by Taylor and Francis.



*Kate Egan & Brendan Dawes, The Jack Plug Universe (2018)*

---

# EVENTS FROM Manchester Classical Association

---

The Manchester Classical Association aims to promote the discipline of Classics and Ancient History in the North West region. Manchester Metropolitan University is one of a growing number of new universities developing research in the ancient and classical worlds, and bringing it to new audiences. Dr April Pudsey of Manchester Metropolitan University is Chair.



---

## “A dupe to the puffs and tricks of all kinds of dealers!” **Fake Latin Inscriptions and their Collection in Eighteenth Century England**

---

*Part of the Manchester Classical Association public lecture series*

**Date:** Wednesday 22nd January 2020

**Time:** 6pm – 7pm

**Location:**

Portico Library,  
57 Mosley Street,  
Manchester M2 3HY

**Tickets:** Free –

See the RAH! website for further details

Latin inscriptions were faked throughout the eighteenth century to be sold on the Italian art market to English Grand Tourists, who acquired them believing them to be genuine souvenirs of antiquity. This talk explores what kinds of inscriptions were faked, how they were understood by those who collected them, and how they have been identified as forgeries today. By bringing the interests of both Italian forgers and British collectors together, to consider the reciprocal nature of their interaction, this talk questions why epigraphic texts were so susceptible to forgery in this particular period.

Refreshments will be available from 5.30, and the talk will run from 6 – 7pm in the format of a public lecture, followed by discussion with the Mc Classical Association Chair, Dr April Pudsey of Manchester Metropolitan University, and brief Q&A session with the audience.



# Castration envy: Queerness and the galli priests of Cybele in Republican Rome

---

*Part of the Manchester Classical Association public lecture series. This is an LGBTQ+ History Month Special Event.*

**Date:** Wednesday 5th February 2020

**Time:** 6pm – 7pm

**Location:** Manchester Central Library, Saint Peter's Square, Event Space 1, Manchester, M2 5PD

**Tickets:** Free – See the RAH! website for further details

Mcr Classical Association presents: Dr Chris Mowat (University of Sheffield), with their talk especially for LGBTQ+ History Month: 'Castration Envy: Queerness and the galli Priests of Cybele in Republican Rome'.

The talk will begin at 6pm and be followed by discussion with the Mcr Classical Association Chair, Dr April Pudsey of Manchester Metropolitan University, and informal Q&A with the audience.

# Classics and Storytelling: Alcestis: in Bits

---

*Part of the Manchester Classical Association public lecture series. This is a performance, followed by a discussion with author and performer.*

**Date:** Wednesday 25th March 2020

**Time:** 6pm – 7pm

**Location:** Manchester Central Library, Saint Peter's Square, Event Space 1, Manchester M2 5PD

**Tickets:** Free – See the RAH! website for further details

Mcr Classical Association presents Stephe Harrop, in performance and in discussion with Dr April Pudsey, Manchester Metropolitan University.

Stephe is a professional storyteller creating and sharing sensitive, stylish, and quick-witted performances in Liverpool, and across the UK. Stephe is also a Senior Lecturer in Drama at Liverpool Hope University.

Our event will open at 6pm with a 20 minute performance of Stephe's recent work Alcestis: in Bits. This will be followed by discussion, and then informal Q&A with the audience.



# Film Screening: **Cleft Lip (2018), re-telling Oedipus**

---

*Part of the Manchester Classical Association public lecture series*

**Date:** Wednesday 22nd April 2020

**Time:** 5.30pm – 8pm

**Location:** 70 Oxford Street, Manchester, M1 5NH

**Tickets:** Free – See the RAH! website for further details

Manchester Classical Association presents a special screening of Erik Knudsen's 'Cleft Lip' (2018), a 21st century retelling of the Oedipus myth which asks the question of 'what happens when fertility becomes a commodity in a fractured society?'

We're lucky enough to be joined by the film's director for this event, which will also feature his introduction to the film and a Q&A session with the audience.



Reece Douglas  
Miranda Benjamin  
Keith French



**Welcome to this year's festival sponsored by the Department of Sociology at Manchester Metropolitan University.**

Building on last year's success – we've gone *larger* – while keeping true to our mission – screening great films which provoke debate and provide an alternative take on crime, justice and punishment in the 21st century.

In this year's programme we've brought you an eclectic mix of crime classics and lesser known gems chosen by *crime experts and film enthusiasts*. They will be on hand to introduce their movie choice and answer your questions at the Q and A sessions after each screening.

HM Pasties will once again be providing delicious award winning food along with hot and cold refreshments at the screenings held at No 70 Oxford Street.

Supported by the Koestler Trust each feature screening at No 70 will be preceded by an award winning short film made by a prisoner and entered into the Trust's 2019 annual award's scheme.

This year we're pleased to be working with an equally eclectic mix of enthusiastic and committed partners. We are grateful for their support and help. Information about them all can be found at the end of this programme.

*See you at the movies* – your festival team:

Kevin Wong, Gavin Bailey and Lucy Simpson



# crime and justice networking and learning fair

**Date:** Wednesday 18th March 2020

**Time:** 1pm – 5pm

**Location:** Geoffrey Manton atrium,  
Rosamond St West, Manchester M15 6LL

**Tickets:** Free – See the RAH! website  
for further details

Come along to this FREE EVENT to  
tell someone what you do and find out  
something you didn't already know.

The Criminal Justice Alliance and Policy  
Evaluation and Research Unit (PERU),  
Manchester Metropolitan University  
are pleased to announce the Crime and  
Justice Networking and Learning Fair.

Doing what *'it says on the tin'* the Fair  
will provide opportunities for criminal  
justice professionals, volunteers and  
service users to find out more about  
what we all do in an informal and relaxed  
environment.

Her Majesty's Prison and Probation  
Service (HMPPS) and Her Majesty's  
Inspectorate of Probation are supporting  
the Fair with stalls and presentations on  
their research and new initiatives such  
as the HMPPS Insights '20.

Alliance staff and university researchers  
will be sharing learning from their  
research with direct application for  
practitioners and policy makers.

Other university staff will be on hand  
to tell you about learning opportunities  
– to undertake postgraduate study and  
how through the Sponsored Masters  
programme, masters students can  
undertake research to help organisations  
improve what they do.

Swan Kitchens – Manchester charity Back  
on Track's catering social enterprise –  
staffed by disadvantaged people getting  
the skills and experience they need to  
build a better future – will be providing  
food and drink.

After this event, we are pleased to be  
having our first screening of the 2020  
Crime and Justice Film Festival. The Chief  
Inspector of Probation, Justin Russell  
will introduce and host a Q and A for his  
movie choice – *Scum* (1979) at 5pm –  
7.30pm at Number 70 Oxford Street.

**PERU** Policy Evaluation  
& Research Unit

**RAH!** Research in Arts  
and Humanities at  
Manchester Met

  
HM Prison &  
Probation Service



**Criminal  
Justice  
Alliance**  
FOR A RANGE  
AND MORE EFFECTIVE  
PROBATION SERVICES

## *Scum* (1979)

---

**Date:** Wednesday 18th March 2020

**Time:** 5pm – 7.30pm

**Location:** LB01, 70 Oxford Street,  
Manchester M1 5NH

**Tickets:** Free – See the RAH! website  
for further details

Our opening movie was originally written and filmed as a BBC play for today but was withdrawn from broadcast due to the violence it depicted. It was re-made as a film in 1979 directed by Alan Clarke,

scripted by Roy Minton and starring Ray Winstone.

*Scum* follows the rise of new arrival Carlin through violence and self-protection to the top of the institution's pecking order. It remains to this day a powerful indictment of the British borstal system with its graphic depiction of racism, violence and very strong language.

Chosen by Justin Russell Her Majesty's Chief Inspector of Probation, Justin will introduce *Scum* and host the Q and A.

## *American Psycho* (2000)

---

**Date:** Wednesday 25th March 2020

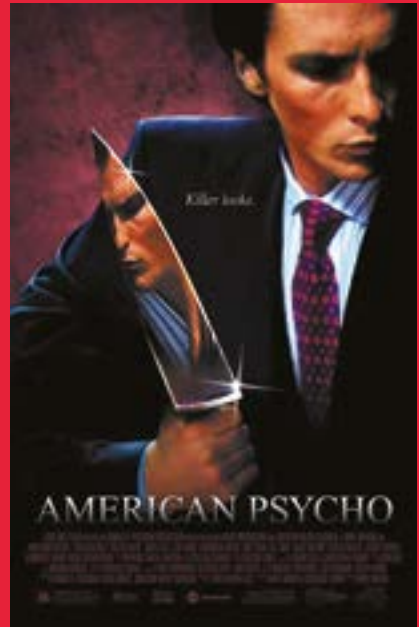
**Time:** 5.30pm – 8pm

**Location:** LB01, 70 Oxford Street,  
Manchester M1 5NH

**Tickets:** Free – See the RAH! website for  
further details

Marking the 20th anniversary of its first release. Directed by Mary Harron and co-written with Guinevere Turner, starring Christian Bale. Based on the 1991 Brett Easton-Ellis novel, this cult movie charts the life of wall street banker and serial killer Patrick Bateman and has been described as a neo-noir satirical psychological horror film.

Selected by Manchester Metropolitan University's Dr Jenny Van Hooff and Dr Mike Salinas, in their introduction and Q & A they will explore the themes of masculinity, capitalism and crime and the eradication of emotion from dating.



## Shoplifters (2018)

**Date:** Wednesday 1st April 2020

**Time:** 5.30pm – 8pm

**Location:** LB01, 70 Oxford Street,  
Manchester M1 5NH

**Tickets:** Free – See the RAH! website  
for further details

### STUDENT CHOICE –

The winner of our student choice competition. Post-graduate student Charlotte Gislam is studying a PhD in Gothic Studies. Charlotte will introduce *Shoplifters* and host the Q & A after the screening.

*Shoplifters* (2018) gives audiences a different perspective on the crime families established by films such as *The Godfather* (1972). Rather than the Shibata's gathering high amounts of status and fear and acting often above the law, the family's crimes in *Shoplifters* are due to desperation and need. They are so low status within society that they appear to be invisible to others until outside focus is brought onto them. The Shibata's live in the outskirts of Tokyo, making ends meet mainly through shoplifting but also pension fraud and other forms of theft. The film examines: definitions of what can be considered right and wrong (whether this is sticking strictly to the law or following an inner moral code), found family and the legal rights of birth parents, and what crimes are considered worse: those which effect a person's physical and mental health or taking that which doesn't 'belong' to yourself.



# Coming Up

---

**The Manchester Crime and Justice Film Festival will continue into term 3. See the RAH! website to book your tickets for the upcoming events and find out more.**

## *Hot Fuzz*, including tour of police museum

---

**Date:** Saturday 25th April 2020

**Time:** Group one from 11.30am – 3.30pm, Group 2 from 1.45pm – 5.30pm

**Location:** Greater Manchester Police Museum & Archives, 57A Newton St, Manchester M1 1ET

**Tickets:** £3.00 – See the RAH! website for further details

## *Le Trou* (The Hole)

---

**Date:** Thursday 30th April 2020

**Time:** 5.30pm – 8pm

**Location:** LB01, Oxford Street, Manchester M1 5NH

**Tickets:** Free – See the RAH! website for further details

## *Twelve Angry Men*

---

**Date:** Wednesday 6th May 2020

**Time:** 5.30pm – 8pm

**Location:** LB01, Number 70 Oxford Street, Manchester M1 5NH

**Tickets:** Free – See the RAH! website for further details.

## *Prisoner's Choice*

---

**Date:** Thursday 14th May 2020

**Time:** 5.30pm – 8pm

**Location:** LB01, 70 Oxford Street, Manchester M1 5NH

**Tickets:** Free – See the RAH! website for further details

## *La Isla Minima* (Marshlands)

---

**Date:** Wednesday 20th May 2020

**Time:** 5.30pm – 8pm

**Location:** Instituto Cervantes, 326-330 Deansgate, Manchester M3 4FN

**Tickets:** Free – See the RAH! website for further details

## *Rex Bloomstein* Documentaries

---

**Date:** Thursday 4th June 2020

**Time:** 3pm – 6pm

**Location:** LB01, 70 Oxford Street, Manchester M1 5NH

**Tickets:** Free – See the RAH! website for further details

---

# EVENTS IN English

---

The Department of English is a large and vibrant community of around fifty internationally renowned writers and critics. The department is home to the Manchester Writing School, and the Manchester Centre for Gothic Studies. Find out more at: [mmu.ac.uk/english](http://mmu.ac.uk/english)

---

## “My Dear Mr Ruskin....”

### Friendship, Inspiration and Scandal

---

**Date:** Running until Monday  
1st June 2020

**Time:** Wednesdays, Thursdays and  
Sundays, 11am – 4pm

**Location:** Elizabeth Gaskell’s House,  
84 Plymouth Grove Manchester,  
M13 9LW United Kingdom

**Tickets:** Included in House  
admission (£5 /£4)


From July 2019 Elizabeth Gaskell’s House will be exploring the friendship between the Gaskell family and John Ruskin in a new year-long exhibition as part of The Ruskin Bicentenary.

Often at odds with their contemporaries, John Ruskin and Elizabeth Gaskell were controversial writers, often sharing the same ideals. Elizabeth openly took sides when Ruskin’s wife, Effie, left him, commenting in a letter that “...She really is very close to a charming character; if she had had the small pox she would have been so.”

This new exhibition takes us from the studios of the Pre-Raphaelites and the Italian grand tour to legacies in education and social reform, showing us that the lives of the often-overlooked contributions of Ruskin and the Gaskells’, continue to the present day. Running from 17 July 2019 until June 2020.



*Ruskin in His Study at Brantwood Credit: The Ruskin Museum, Coniston*



*Black-Sunday*

# The History of Gothic Cinema: **HOME** course

---

*Run by Dr Xavier Aldana Reyes from the Manchester Centre for Gothic Studies*

**Date:** 14th January 2020 –  
3rd March 2020

**Time:** Evenings

**Location:** HOME Manchester, 2 Tony  
Wilson Pl, Manchester M15 4FN

**Tickets:** Full price £80, concessions  
£60. Course tickets include entry to  
two screenings. Booking link will be on  
HOME website soon.

What is Gothic cinema and how does it differ from horror films? This chronological course will explore its history, from its transitional origins in the phantasmagoria show and the first 'trick' films to its postmodern fragmentation in the Gothic pastiches of Tim Burton,

with a focus on industry and genre. The course will include six sessions and two screenings, with weeks devoted to topics such as the monster cinema of the 1920s and 1930s, the Female Gothics of the 1940s, the introduction of colour photography in the Gothic period films of the late 1950s, the European exploitation booms of the 1960s and 1970s, and the animated films and Gothic superheroes that dominate the present.

Dr Xavier Aldana Reyes will be taking the workshop. Dr Reyes is Reader in English Literature and Film and a founder member of the Manchester Centre for Gothic Studies. He is the author of the books *Gothic Cinema* (2020), *Spanish Gothic* (2017), *Horror Film and Affect* (2016) and *Body Gothic* (2014).

# Oak Earth Day: John Ruskin, Ecology and Creativity

---

*Organised by Dr Rachel Dickinson,  
Dr Paul Evans and Dr Jennie Bailey*

**Date:** Friday 24th January 2020

**Time:** 11am – 4pm

**Location:** Elizabeth Gaskell House, 84  
Plymouth Grove, Manchester M13 9LW

**Tickets:** Free – See RAH! website for  
further details

As John Ruskin's bicentenary draws to a close, you are invited to an exciting day of talks, workshops, and a book launch on the theme of Ruskin and the environment. The event will culminate in the launch of *Oak Earth*, a chapbook written by The Guardian Country Diarist and Manchester Metropolitan University lecturer Dr Paul Evans. The chapbook was commissioned as part of an HLF and Guild of St George-funded project 'Ruskin in Wyre' and written in response to

Ruskin Land, an area in the Wyre Forest in Worcestershire.

Speakers and workshop leaders include: Jenny Robbins and Tim Selman of the Wyre Community Land Trust (the body that manages Ruskin Land), Dr Jennie Bailey (writer and educator) and Dr Rachel Dickinson (lecturer at Manchester Metropolitan University and Master of Ruskin's Guild of St George). The day takes place in the beautiful surroundings of Elizabeth Gaskell's house and, weather permitting, will be in the garden as well as inside.

Participants will receive a free copy of Paul's new book.

The event is free and has been made possible by generosity of the Guild of St George and Manchester Metropolitan University.



*Kate Greenaway Study of Rock, Moss and Ivy copyright Guild of St George/Museums Sheffield*

---

# EVENTS FROM Manchester Writing School

---

The Manchester Writing School at Manchester Met is one of the most successful literary centres running in the UK today, and home to the country's largest postgraduate English and Creative Writing community. The School's Creative Director is Carol Ann Duffy DBE (Poet Laureate 2009-2019). Find out more at: [manchesterwritingschool.co.uk](http://manchesterwritingschool.co.uk)

---

## 2019 Manchester Writing Competition Gala

---

**Date:** Friday 7th February 2020

**Time:** 7pm

**Location:** Chetham's Library, Long Millgate, Manchester M3 1SB

**Tickets:** Free – See the RAH! website for further details

*Join the team from Manchester Metropolitan University to award their 2019 Manchester Poetry and Fiction Prizes*

Celebrate the creative work shortlisted for the international Writing Competition with some special guests and an all-star line-up.

Established by Carol Ann Duffy in 2008, the Manchester Writing Competition has awarded more than £175,000 to its winners. This year we will be awarding two £10,000 prizes: the Manchester Poetry Prize for best portfolio of poems and the Manchester Fiction Prize for best short story.

The evening will open with a drinks reception and there will be short readings from each of the poetry and fiction finalists. Regular hosts James Draper and Matthew Frost return to comper the night and this year's judges Malika Booker, Jonathan Gibbs, W. N. Herbert, Sakinah Hofler, Karen McCarthy Woolf,



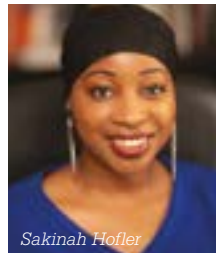
Malika Booker



Karen McCarthy Woolf



Lara Williams



Sakinah Hofler



Jonathan Gibbs

Nicholas Royle and Lara Williams will be there to celebrate the UK's biggest literary awards for unpublished writing. Carol Ann Duffy will close the evening by presenting the winners with their £10,000 golden envelopes.

Short-listed pieces will be available to read at [manchesterwritingcompetition.co.uk](http://manchesterwritingcompetition.co.uk)



# Writers at Manchester Met: Rachel Mann & Karen Solie

---

Hosted by Malika Booker, Lecturer in Creative Writing at Manchester Metropolitan University

**Date:** Thursday  
13th February 2020

**Time:** 6.30pm – 8pm

**Location:** 70 Oxford Street, Manchester M1 5NH

**Tickets:** Free – See the RAH! website for further details

Come and join poets Rachel Mann and Karen Solie, in conversation with Malika Booker, as they discuss their poetry and their ideas of faith and devotion. Rachel Mann is a priest, poet and broadcaster, her debut collection is 'A Kingdom of Love' (Carcenet, 2019). Karen Solie's latest collection is 'The Caiplie Caves' (Picador, 2019), shortlisted for the TS Eliot Prize.



Karen Solie



Malika Booker



Rachel Mann

# Professor Jean Sprackland Book Launch: 'These Silent Mansions'

---

Jean Sprackland



**Date:** Thursday 27th February 2020

**Time:** 6pm arrival, 6:30pm – 8pm

**Location:** 70 Oxford Street, Manchester M1 5NH

**Tickets:** Free – See the RAH! website for further details

Jean Sprackland's first book of non-fiction, *Strands: A Year of Discoveries on the Beach*, won the 2012 Portico Prize. She is the author of five poetry collections, including *Tilt*, which won the 2007 Costa Poetry Award and, most recently, *Green Noise* (2018).

# The “Love Writing” Series Launch

---

*Organised by Manchester Writing School's Catherine Fox and Kirsty Bunting.*

**Date:** Saturday 15th February 2020

**Time:** 10am – 5pm

**Location:** International Anthony Burgess Foundation, 3 Cambridge St, Manchester M1 5BY

**Tickets:** £10 – See the RAH! website for further details

In celebration of the Romantic Novelists Association's 60th Anniversary, with special guest author Debbie Johnson.

A celebration for Manchester Metropolitan University staff, students, RNA members, publishing professionals, authors and the general public.

If you love reading or writing romantic fiction, come along to meet authors, Manchester Metropolitan University academics and industry professionals in a day of talks and reading celebrating the 60th anniversary of the Romantic Novelists Association.

Featuring a Q&A session with Special Guest Author Debbie Johnson, author of the internationally bestselling *Comfort Food Café* series.

Ticket includes morning refreshments, cupcake and bubbly/OJ.



*Debbie Johnson*



# Carol Ann Duffy and Friends: Ella Duffy and Andrew McMillan

---

*Carol Ann Duffy returns to host new writers from Manchester Met and special guests*

**Date:** Monday 23rd March 2019

**Time:** 7pm

**Location:** Royal Exchange Theatre, St Ann's Square, Manchester M2 7DH

**Tickets:** £13, concessions available. Booking on Royal Exchange website.

The Manchester Writing School at Manchester Metropolitan University invites you to an evening of poetry and music in the Royal Exchange Studio, hosted by Carol Ann Duffy.

**Ella Duffy** was a winner of the Foyle Young Poets of the Year Award 2010. She was commended in the W. S. Graham

challenge on Young Poets Network as part of Graham's centenary celebrations; a commended poet in the Melting Ice challenge 2017; and a winner in the Riddle Me This challenge. She was a finalist in the 2019 Ambit Poetry Competition.

**Andrew McMillan's** debut collection *physical* was the first poetry collection to win The Guardian First Book Award and it went on to win many other prizes. His second, *playtime*, was a Poetry Book Society Recommendation for Autumn 2018, a Poetry Book of the Month in both The Observer and The Telegraph, a Poetry Book of the Year in The Sunday Times and won the Polari Prize. He is senior lecturer at the Manchester Writing School.

*Carol Ann Duffy*



---

# EVENTS FROM The Manchester Game Studies Network

---

The Manchester Games Studies Network (MGSN), established at Manchester Metropolitan University in 2016, is an interdisciplinary research group working on games and play. Our focus is on both analogue and digital games. Find out more here: [manchestergamestudies.org](http://manchestergamestudies.org)



---

## Games and Public Engagement

---

*Part of the Manchester Game Studies Network seminar series*

**Date:** Wednesday 15th January 2020

**Time:** 4pm – 5pm

**Location:** GM303, Geoffrey Manton Building, Rosamond Street West, Manchester M15 6LL

**Tickets:** Free – Just turn up!

What do three beakers full of BB pellets, an IKEA box and Wonderwall by Oasis have to do with Health Data Science? Join Dr Jana Wendler from Playfuel Games CIC to explore how physical games can bring research and academic ideas to wider audiences. She will share examples from her playful work across different fields, discuss mechanics of interactivity, and reflect on the joy and challenges of creative-academic collaborations.





## Playing Cleopatra

---

*Part of the Manchester Game Studies  
Network seminar series*

**Date:** Wednesday 29th January 2020

**Time:** 4pm – 5pm

**Location:** GM Room 303, Geoffrey Manton  
Building, Rosamond Street West  
Manchester M15 6LL

**Tickets:** Free – Just turn up!

In this seminar, Dr Jane Draycott will give a presentation of Cleopatra VII, the last Ptolemaic ruler of Egypt, in the Assassin's Creed franchise. In doing so, Dr Draycott will explore the facts and fictions that lie behind it, and compare and contrast it with other presentations of Cleopatra in popular culture.



# Live-Action Roleplaying Games: Monsters, Props and Philosophy

---

*Part of the Manchester Game Studies  
Network seminar series*

**Date:** Wednesday 12th February 2020

**Time:** 4pm – 5pm

**Location:** GM307, Geoffrey Manton  
Building, Rosamond St West,  
Manchester M15 6LL

**Tickets:** Free – Just turn up!

In this seminar Dr Chloé Germaine Buckley will explore the philosophy of games and the potential of play to disrupt players' common-sense perspective of the world. Various "turns" in modern philosophy, including materialist and speculative philosophies, suggest that humans need to think beyond an anthropocentric perspective. Instead of seeing matter and nature as passive resources for human conception, we need to recognise nonhuman vitality and agency.

Various analogue forms of gaming, especially live-action roleplaying games, produce experiences for players that accord with this ethical task. LARP might be a form of training, one which requires a willingness to "play the fool", that chastens the destructive human will to mastery. In this seminar, Dr Germaine Buckley will challenge accounts of play that characterise it as a humanist mode, that place human agency front and centre: humans construct and deconstruct the world through play. In contrast, this seminar will suggest that LARP asks its players to account for the *unhuman* nature of reality, to consider that fact that it is the world that makes us.

Dr Chloe Germaine Buckley is Senior Lecturer in English at Manchester Metropolitan University.

# Pencil Puzzles and Computational Intelligence

---



*Part of the Manchester Game Studies  
Network seminar series*

**Date:** Wednesday 26th February 2020

**Time:** 4pm – 5pm

**Location:** JD Room 224,  
John Dalton East, Chester Street,  
Manchester M1 5GD

**Tickets:** Free – Just turn up!

In this talk, Dr Huw Lloyd will report on recent work that has been done on solving Japanese Pencil Puzzles with nature-inspired algorithms. Many (if not most) of these puzzles belong to a class of problems which is known to be computationally intractable. In this talk, Huw will discuss how the initial work on solving Sudoku with Ant Colony Optimization has broadened into a general study of how these puzzles may be used to study the properties of existing algorithms, or as a playground for developing new computational intelligence techniques.

# Serious Games, Games and the Internet of Things

---

*Part of the Manchester Game Studies  
Network seminar series*

**Date:** Wednesday 11th March 2020

**Time:** 4pm – 5pm

**Location:** Room G89, Brooks Building,  
53 Bonsall Street, Manchester M15 6GX

**Tickets:** Free – Just turn up!

In this talk, Dr John Henry will explore the future of Serious Games for mental and physical rehabilitation. Serious Games have a long presence in time in academia and industry, with solutions focusing on improving healthcare experiences, restructuring physical and mental rehabilitation solutions, spreading awareness on key and trending topics, educating in the classroom, amongst others.

The availability and regressed learning curve of Internet of Things solutions established a new perspective for Serious Games and posed new research questions including “How should we combine the two technologies?” and “What new outcomes would we obtain by revisiting established Serious Games applications with the Internet of Things?”





## Regulating Virtual Bodies: Surveillance, Convention and Taboo in Representations of The Human Body in Video Games in Japan

---

*Part of the Manchester Game Studies  
Network seminar series*

**Date:** Wednesday 25th March 2020

**Time:** 4pm – 5pm

**Location:** GM Room 328, Geoffrey  
Manton Building, Rosamond Street West,  
Manchester M15 6LL

**Tickets:** Free – Just turn up!

In this seminar, Dr William H. Kelly will discuss his recent research into the censorship of video games in Japan. Based on long-term field research of the production (and producers) of video games in Japan, this examines the relationship between the rating and censorship of video games and the human body, which figures prominently in rating and censorship guidelines and criteria both in Japan and elsewhere.

Drawing on conversations, meetings, interviews and various other encounters

with dozens of video game producers and creators and other representatives of Japanese video games companies, representatives of the Computer Entertainment Software Association (CESA) and the Computer Entertainment Rating Organization (CERO), the seminar will explore conventions, rules and prohibitions governing the rendering and treatment of the human body within the context of video game content, situating these with reference to culture, politics, history, class/caste, ritual beliefs and practices and an aversion to referencing sensationalist criminal events perpetrated through the mass media in Japan.

This seminar attempts to illustrate how depictions of bodies are rendered safe for consumers of video games in Japan through their treatment as “sites of surveillance” in the rating and censoring of video game content.



---

# EVENTS IN History

---

Manchester Metropolitan University has one of the largest History programmes in the north of England, boasting an impressive track-record for the quality of its teaching and our internationally recognised staff research. Find out more here: [mmu.ac.uk/hpp](http://mmu.ac.uk/hpp)

---

## LGBTQ+ Histories

---

*Part of the History Research Centre's Seminar Series at Manchester Metropolitan University*

**Date:** Wednesday 15th January 2020

**Time:** 4.15pm – 5.30pm

**Location:** GM224, Geoffrey Manton Building, Rosamond St West, Manchester M15 6ELL

**Tickets:** Free – Just turn up!

‘To get freedom, one went abroad a lot’: Entangled histories of male homosexuality, 1950-1970

*Julia Maclachlan (University of Manchester)*

‘Voices in my ear’: Intimacies at London Lesbian and Gay Switchboard, 1974-1990

*Ralph Day (Birkbeck, University of London)*



## Sport, control and order

---

*Part of the History Research Centre's Seminar Series at Manchester Metropolitan University*

**Date:** Wednesday 29th January 2020

**Time:** 4.15pm – 5.30pm

**Location:** GM224, Geoffrey Manton Building, Rosamond St West, Manchester M15 6LL

**Tickets:** Free – Just turn up!

Nick Piercey (Manchester Met) will present on *Constructing spaces, constructing bodies: Sport, control and order (and some fun) in the new Dutch culture around 1900*.

# Recognising Wilgefortis: Gender Diversity in History and the Power of Names

---

*Part of the History Research Centre's Seminar Series at Manchester Metropolitan University*

**Date:** Wednesday 26th February 2020

**Time:** 5.30pm – 6.45pm

**Location:** GMLT3, Geoffrey Manton Building, Rosamond St West, Manchester M15 6LL

**Tickets:** Free – See the RAH! website for further details

The point of departure for this talk is a painting by Hieronymus Bosch depicting a crucified saint whose identity, including their gender identity, has sparked controversy. Current consensus is that the image represents the bearded female martyr, Saint Wilgefortis, also known as Uncumber, Ontcommer, Kummernis etc., but other identifications have been proposed. Contextualising the artwork with reference to medieval and early modern understandings of gender diversity and transformation, this paper will stage a dialogue between Bosch's painting and current debates about the role of identity categories and terminology in histories of gender and sexuality.

What happens when a premodern image is viewed through the prism of modern notions of trans identity and genderqueerness? What's in a name?

**Robert Mills** is Professor of Medieval Studies and Head of the History of Art Department at UCL. Between 2015 and 2018 Mills directed qUCL, UCL's LGBTQ research network. Previously he was director of the *Queer@King's* research centre at King's College London. Mills's publications include *Suspended Animation: Pain, Pleasure and Punishment in Medieval Culture* (2005), *Seeing Sodomy in the Middle Ages* (2015) and *Derek Jarman's Medieval Modern* (2018). He also contributed the medieval section to *A Gay History of Britain* (2007).

*This event has been organised in collaboration with the postgraduate-run Queer Research Network Manchester. The lecture is part of LGBTQ History Month 2020*



# Regendering the Tetrarchy

---

*Part of the History Research Centre's Seminar Series at Manchester Metropolitan University*

**Date:** Wednesday 11th March 2020

**Time:** 4.15pm – 5.30pm

**Location:** GM224, Geoffrey Manton Building, Rosamond St West, Manchester M15 6LL

**Tickets:** Free – Just turn up!

Julia Hillner (University of Sheffield) will present on *Regendering the Tetrarchy*.

## Hidden Spaces and Forgotten Places in the British Home, c.1750-1950

---

*A conference organised by Thomas McGrath, a history PhD candidate at Manchester Metropolitan University*

**Date:** Monday 16th March 2020

**Time:** Approx. 9:30am – 5:00pm

**Location:** Brooks Building, 53 Bonsall St, Manchester M15 6GX

**Tickets:** To be confirmed – See the RAH! website for further details

The home is an increasingly important focus of research. Attention has tended to focus on key rooms, such as the drawing room and dining room, and more recently on bedrooms and the kitchen. This leaves a lot of domestic space largely unexplored. We want to explore more about those places in the British home, which were seen as either private, personal spaces, or indeed those spaces and places which are often overlooked in academic research. Through examining the use of the home by its inhabitants, we hope to reconsider the social, cultural and aesthetic relationship between public and private spaces.



# As Seen on Screen: Period dramas, historical ‘accuracy’ and the role of the historical adviser

---

*Part of the History Research Centre's  
Seminar Series at Manchester  
Metropolitan University*

**Date:** Wednesday 18th March 2020

**Time:** 5.30pm – 7pm

**Location:** GMLT3, Geoffrey Manton  
Building, Geoffrey Manton Building,  
Rosamond St West, Manchester M15 6LL

**Tickets:** Free – See the RAH! website  
for further details

Dr Hannah Greig (University of York) will  
present on *As Seen on Screen: Period  
dramas, historical ‘accuracy’ and the role  
of the historical adviser*.

Dr Hannah Greig is a senior lecturer  
in history at the University of York  
where she teaches eighteenth-century  
history and public history. Alongside her  
academic work she is an established  
consultant to film, TV and theatre  
productions with over a decade of  
experience of working closely with period  
dramas. Her credits include feature films  
“The Duchess” (2008) and “The Favourite”  
(2018); BBC dramas including “Poldark”  
(series 1-5), “Death Comes to Pemberley”,  
“Jamaica Inn”, and “Gunpowder”; and  
ITV’s recent adaptation of Jane Austen’s  
unfinished novel, “Sanditon”. In this talk  
Dr Greig will reflect on her practice-based  
work as a consultant, the place of film  
and television as a form of public history,  
and the issues involved in attempting to  
create a historically ‘accurate’ drama.



---

# EVENTS IN Philosophy

---

Manchester Met is one of the leading centres for research in Modern and Contemporary European Philosophy in the UK. Staff are internationally recognised experts in their specific research areas. The programme regularly hosts research events, including day workshops, colloquia and conferences. Find out more here: [mmu.ac.uk/hpp](http://mmu.ac.uk/hpp)

---

## Asceticism and Ethics

---

*Part of the Human Sciences Seminar Series at Manchester Metropolitan University*

**Date:** Thursday 23rd January 2020

**Time:** 5pm – 7pm

**Location:** GM 230,  
Geoffrey Manton Building  
Rosamond St West  
Manchester  
M15 6LL

**Tickets:** Free – Just turn up!

Dr Deborah Casewell (Liverpool Hope University) will present on *Asceticism and Ethics*.

Asceticism, philosophically speaking, tends to be seen ambiguously, if not with hostility, due to its focus on self-renunciation and submission. However, aspects of these concerns correlate with moves in feminist philosophy on the topics of vulnerability and embodiment.

These particular “weaknesses” have been subverted into a strength, into a description of the human condition, and the work of feminist ethics and philosophy seeks to positively articulate vulnerability as a defining aspect of human nature, and of the human condition. This paper looks at Simone

Weil’s lived out asceticism and philosophy of decreation to explore and extrapolate her ascetic ethics, where her thought is taken up and measured against her own attitude towards her vulnerability and embodiment. Thus I intend to marry her ascetical practices with her philosophical and her religious thought, arguing that not only is her ethics impersonal, but also ascetic.

*Simone Weil*



# To lose one's bearings: **Levinas on solitude, art and confinement**

---

*Part of the Human Sciences Seminar Series at Manchester Metropolitan University*

**Date:** Friday 28th February 2020

**Time:** 5pm – 7pm

**Location:** GM 230, Geoffrey Manton Building, Rosamond St West, Manchester M15 6LL

**Tickets:** Free – Just turn up!

Professor Tina Chanter (Kingston University) will present on *To lose one's bearings: Levinas on solitude, art and confinement*.



# Reflections on Race in the History and Historiography of Philosophy: **Fanon's case**

---

*Part of the Human Sciences Seminar Series at Manchester Metropolitan University*

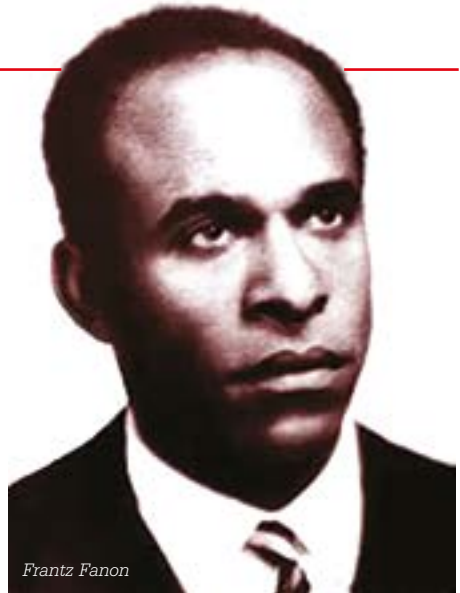
**Date:** Thursday 19th March 2020

**Time:** 5pm – 7pm

**Location:** GM 230, Geoffrey Manton Building, Rosamond St West, Manchester M15 6LL

**Tickets:** Free – Just turn up!

Dr. Lucie Mercier (UoC, Berkeley and Paris 8) will present on *Reflections on Race in the History and Historiography of Philosophy: Fanon's case*.



# What is a Philosophical Art History?

---

*Part of the Human Sciences Seminar Series at Manchester Metropolitan University*

**Date:** Thursday 26th March 2020

**Time:** 5pm – 7pm

**Location:** GM 230, Geoffrey Manton Building,  
Rosamond St West,  
Manchester M15 6LL

**Tickets:** Free – Just turn up!

Dr. Kamini Vellodi (University of Edinburgh) will present on  
*What is a Philosophical Art History?*

---

## **EVENTS IN Politics and International Relations**

---

**Politics at Manchester Metropolitan University boasts research and teaching strengths in American Foreign Policy, European politics and Energy Policy, British Political History, Latin American Politics, Social Theory and Communal Studies, and International Relations. Find out more here: [mmu.ac.uk/hpp](http://mmu.ac.uk/hpp)**

**The Politics and International Relations Public Lecture Series is sponsored by the History, Politics and Philosophy department and organized by Kathryn Starnes, Lecturer in International Relations at Manchester Metropolitan University.**

---



# Citizen participation 2.0



Part of the Politics and International Relations Public Lecture Series

**Date:** Wednesday 22nd January 2020

**Time:** 1.30pm – 3pm

**Location:** GM 3.42, Geoffrey Manton Building, Rosamond St West, Manchester M15 6LL

**Tickets:** Free – See the RAH! website for further details

Participatory innovations such as Assemblies of randomly-selected lay citizens are increasingly seen as a vital tool in battling against political polarisation and declining citizen confidence and engagement in democracy. Participatory governance, however, is much more than the occasional citizen assembly. Increasingly practitioners are moving away from a one-off approach, which to date has had limited impact, towards more complex participatory interventions that look like systems of permanent and interconnected online and offline spaces of participation, with multiple opportunities for citizens to influence policymaking at different points.

The lecture will cover some of these developments and discuss some recent examples, based on current work that

Sonia Bussu is carrying out with Adrian Bua, De Montfort University, and Rikki Dean, Goethe University Frankfurt, to understand the impact of these participatory systems:

- Can systems-oriented participation help recapture the radical potential of participatory governance for social transformation?
- Can it provide a means for social movements to realise bottom-up demands?
- What are the pragmatic challenges of designing these complex participatory systems?
- How can they manage the tensions between the different demands of lay citizens, organised civil society, and public officials?

**Sonia Bussu** is a public policy scholar and her main research interests are participatory governance and participatory action research. Over the years, she has led research and published on participatory and deliberative processes, community engagement, and coproduction of public services.



# Smart Cities' Environmental Dreams and Their Dirty Material Politics

---

*Part of the Politics and International Relations Public Lecture Series*

**Date:** Wednesday 5th February 2020

**Time:** 1.30pm – 3pm

**Location:** GM 3.42, Geoffrey Manton Building, Rosamond St West, Manchester M15 6LL

**Tickets:** Free – See the RAH! website for further details

Media has many stories about smart cities' bright promises, and these celebratory narratives are echoed by the cities' own websites. Although ecology is usually not the primary focus of smart cities' self-promotion, their websites usually tell the story of how they would ultimately make the environment better. They would streamline the collection of waste by using smart bins; use smartphone-operated bike-rental schemes; control traffic via digital dashboards; run paper-free egovernment services; or even help asthma-suffering children by digitally monitoring and communicating the level of air pollution at playgrounds.

However, despite the overwhelming rhetoric of being environmental saviours, smart cities pose multiple ecological threats, most of which are invisibilised, because they take place elsewhere: the ever-growing extraction of resources needed to produce the actual devices: from a range of smart sensors to the smartphones and computers themselves; the toxicity of their production process and of the e-waste left behind after their short lives, often made disposable by design; and the rapidly increasing energy demands of data farms, needed to sustain

every air pollution sensor, every city dashboard, every smart bus stop, every 'smart' communication network.

At the heart of my talk, thus, lies a troubling, yet crucial question: how to reconcile the usefulness of digital technologies and, more specifically, their rapid and expansive adoption into environmentally driven initiatives and sustainability projects such as smart cities, with the extensive environmental damages brought on by the digitization itself?

**Dr Adi Kuntsman** is Senior Lecturer in Digital Politics at the Politics department of Manchester Metropolitan University. Their past work explored Internet cultures in Russia, Eastern Europe and Russian-speaking diasporas; digital emotions, digital memory and digital militarism; as well as sexual historiographies of Soviet GULAGs, and contemporary LGBT politics. Kuntsman's current work focuses on selfies between political activism and biometric governance; the politics of 'opting out' of digital datafication; and environmental damages of digital technologies.

@wishcrys



# Romanticising the New Silk Road: The Visuals of Chinese-Russian Media

---

*Part of the Politics and International Relations Public Lecture Series*

**Date:** Wednesday 12th February 2020

**Time:** 1.30pm – 3pm

**Location:** GM 3.42, Geoffrey Manton Building, Rosamond St West, Manchester M15 6LL

**Tickets:** Free – See the RAH! website for further details

The Belt and Road Initiative (BRI) is arguably the key to China's contemporary economic strategy. However, there is low understanding and trust towards the project in many of the states in which concrete collaborations are planned or underway. This talk interrogates how the Chinese state has responded to such skepticism, focusing on media collaboration between China's and Russia's state-owned international broadcasters, CGTN, and RT. The particular focus is a 5-part co-produced documentary series aimed at introducing international English-speaking audiences to the metaphorical new 'Silk Road'.



**Precious Chatterje-Dooddy** is a Lecturer in Politics and International Studies at Open University. Her research is focused on communication, perception and foreign policy, with a particular focus on Russia, as well as its international broadcaster, RT.

This series reimagines the economic and infrastructural project in both historically-romantic and futuristic ways, with human stories central to both. But how strategic is this Chinese-Russian media partnership? Situating the series within the broader context of Russian and Chinese political, economic and media strategy reveals certain tensions underlying this collaboration, as well as broader limitations that apply when state actors attempt to reimagine their policy activities via global media.



# Welfare Reform and the Third Sector in Russia and Belarus

---

*Part of the Politics and International Relations Public Lecture Series*

**Date:** Wednesday 11th March 2020

**Time:** 1:30pm – 3:00pm

**Location:** GM 3.42, Geoffrey Manton Building, Rosamond St West, Manchester M15 6LL

**Tickets:** Free – See the RAH! website for further details

Since the collapse of the USSR, post-Soviet countries have been following different paths of development. While some conducted radical political and economic reforms, others made only partial changes to their political and economic structures. However, in both cases there were significant changes in national welfare systems. In Russia since 2000 the welfare system has moved away from the Soviet model of heavy subsidies and broad state social provision to a more mixed model based on means-testing, privatisation and the increasing involvement of non-state actors such as NGOs and commercial enterprises in the provision of social services to different vulnerable groups. In Belarus the state has remained largely responsible for the delivery of social services as it was during the Soviet period, but quality is often poor, eligibility has been tightened since 2007 and there have been nascent attempts recently to involve NGOs in the delivery of social services. At the same time, provision of public welfare continues to be of vital importance in maintaining the legitimacy of the electoral authoritarian regimes in both countries and non-state actors working in this area may have some capacity to have input into the development of welfare policy.

In this talk, Dr Eleanor Bindman will use data gathered during extensive interviews in both countries in 2015-2018 to answer the following questions: What are the recent developments (and their causes) in welfare policies in Russia and Belarus? How does the political regime in these two post-Soviet states influence opportunities for non-state actors to participate in welfare policy? What role do they play in the national policy process? Are there any windows of opportunities for the non-state actors to increase their influence on welfare policies? And, if so, what are the potential outcomes of such participation?

**Dr Eleanor Bindman** joined Manchester Metropolitan University in January 2019. Prior to her current appointment she was Lecturer in Politics at the University of Liverpool and Leverhulme Early Career Fellow at Queen Mary, University of London. She completed her PhD in Russian and EU Politics at the University of Glasgow in 2013 and has held visiting fellowships at the University of Helsinki and New York University. Her research interests include policymaking processes in electoral authoritarian regimes, welfare reform, social policy and social rights in Russia and other post-Soviet states. She is currently working on two research projects: 1) a comparative project on social security and social service delivery in Russia and Belarus and 2) a project in collaboration with Dr Claire Pierson (University of Liverpool) exploring how authoritarian regimes use conservative family policy to achieve political outcomes.

# Pain: Alienation and Discursive Abuse

---

*Part of the Politics and International Relations Public Lecture Series*

**Date:** Wednesday 25th March 2020

**Time:** 1:30pm – 3:00pm

**Location:** GM 3.42, Geoffrey Manton Building, Rosamond St West, Manchester M15 6LL

**Tickets:** Free – See the RAH! website for further details

My aim in this paper is to draw attention to a currently underdeveloped notion of pain and alienation, in order to sketch an account of the harms of 'discursive abuse'.

This form of abuse comprises systemic practices of violating a person's vulnerable integrity as a knowing agent. Discursive abuse results in, what I would like to call, 'agential alienation'.

This particular genus of alienation, whose broad conceptual origins lie in the respective works of Hegel and the early Marx, involves an agent being robbed of their self-conception as a rational inquirer and participant in a deliberative public sphere.

Such alienation causes a particular kind of pain for an agent that often has harrowing material effects.

**Dr Paul Giladi** received his PhD in Philosophy in June 2013 from the University of Sheffield. In August 2019, he was made Senior Lecturer in Philosophy at Manchester Metropolitan University, and appointed the Director of Undergraduate Studies for the BA Philosophy Programmes.

Dr Giladi has published numerous articles in journals and edited collections on Hegel, pragmatism, critical social theory, feminism, and contemporary Anglo-American philosophy.



---

# EVENTS IN Substance Use and Associated Behaviours (SUAB)

---

Our Substance Use and Associated Behaviours (SUAB) Research Group is an exciting and creative group comprising Manchester Met academics from a range of disciplines, as well as community partners and associates from policy and practice around the UK and internationally. The overall purpose of SUAB is to develop and conduct research and related activities that ultimately result in a better service for people who experience problematic substance use. Find out more here: [mmu.ac.uk/rcass/our-expertise/suab](http://mmu.ac.uk/rcass/our-expertise/suab)

---

## Responding to Drug Related Deaths

---

**Date:** Tuesday 28th January 2020

**Time:** 5.30pm – 7.30pm

**Location:** LT 5, Geoffrey Manton Building, Rosamond St West, Manchester M15 6LL

**Tickets:** £5 – See the RAH! website for further details

The Substance Use and Associated Behaviours (SUAB) research group at Manchester Metropolitan University invites you to the next SUAB Seminar, Responding to Drug Related Deaths, with speakers:

- Dr Andrew McCauley (Principal Healthcare Scientist, BBVSTI Team, Health Protection Scotland, and, Senior Research Fellow, School of Health & Life Sciences Glasgow Caledonian University)
- Mr Tom Le Ruez (Tees Preventing Drug Related Deaths Co-ordinator, Public Health South Tees)
- Dr Judith Yates (Member of International Doctors for Healthier Drug Policies)

## SUAB Annual European Conference – Substance use among older adults

---

**Date:** Wednesday 1st April 2020

**Time:** 9am – 5pm

**Location:** Ininside hotel, 1 First St, Manchester M15 4RP

**Tickets:** £20 – £50 – See the RAH! website for further details

The Substance Use and Associated Behaviours (SUAB) research group at Manchester Metropolitan University is delighted to present the SUAB 2020 International Conference on Substance Use Among Older Adults. This one-day conference will discuss the trajectories, experiences and impact of substance use among our aging population, with speakers offering a national and international perspective.

---

# EVENTS IN Manchester Centre for Youth Studies

---

The Manchester Centre for Youth Studies (MCYS) is a world leader in youth-informed and youth-led research that positively influences the lives of young people. Find out more here: [mmu.ac.uk/mcys](http://mmu.ac.uk/mcys)



---

## Europe and the Child: Crisis, Activism and Culture

---

**Date:** Wednesday 19th February 2020

**Time:** 9am – 5pm

**Location:** Geoffrey Manton Building,  
Rosamond St West, Manchester M15 6LL

**Tickets:** Free – See the RAH! website for further details

The Brexit vote in the UK exposed many national divides, one distinctive one was generational, with youth overwhelmingly voting to remain. Despite the rise of populism, a febrile political discourse around Brexit and immigration in the UK, and a pervasive denigration of the UK's relationship with European countries across the media, the voices of children and young people have emerged as dynamic and thoughtful interventions in current debates. Prominent youth leaders have emerged who have managed to mobilise transnational Europe-wide protests, networks and new movements. These protests and movements have garnered extreme and dichotomous media responses, which expose both a paradoxical concept of childhood and an uneasiness with a transnational youth culture and collaboration. Likewise, the climate crisis has both mobilized and

challenged posterity ethics that position children and young people as objects of care.

Extreme media responses towards the global impact of Swedish climate change activist Greta Thunberg and her school strikes, as well as other young people involved in protests across the globe such as Black Lives Matter, Antifa and Extinction Rebellion, suggest a sense of unease around children and young people who refuse to remain innocent about the darkness that threatens them. At same time, these are also hopeful youth voices in that they express transnational, cosmopolitan and global identities.

This one-day symposium will generate inter- and multi-disciplinary dialogue on these issues. We will explore how literature, culture and media for children and young people represents and mediates the global concerns of the present and how it might promote intercultural dialogue, amplify young people's voices across Europe or otherwise create a space for transnational debates.



Greta in Washington

---

## EVENTS IN Cross Faculty

---

# Roots and Research: 12th Annual Postgraduate Conference

---

**Date:** Wednesday 4th March 2020

**Time:** To be confirmed

**Location:**

Manchester Met Student's Union

**Tickets:** Free – See RAH! website for further details

Each year, a committee of current students are invited to design and deliver a major national postgraduate research conference.

This year, the theme for the conference is Roots and Reach! This multidisciplinary theme has been designed to bring together PGRs from all backgrounds, to celebrate the diversity and uniqueness of each research journey, from its original roots to its ultimate reach. All of our research is unique, and we have all been inspired and motivated in some shape or form to pursue, grow and shape our projects.



# Professorial Inauguration Lecture Series

---

We are extremely proud to celebrate the achievements of our new professors, whether they have been internally promoted or appointed externally.

The inaugural lectures provide an opportunity for our most prolific and successful researchers to update us on their current projects and future research plans, and to share their research insights with the wider public.

All lectures are free and open to all.

## Professor Kristina Niedderer:

### Designing for Mindful Responsibility

---

**Date:** Monday 13th January 2020

**Time:** Wine reception 5.30pm,  
lecture 6pm

**Location:** GM LT1, Geoffrey Manton  
Building, Rosamond St West,  
Manchester M15 6LL

**Tickets:** Free – See the RAH! website  
for further details

#### Designing for Mindful Responsibility

In this talk, I will introduce the idea of mindful design in the broader context of design for behaviour change. Mindful design essentially seeks to promote personal responsibility and can be applied in a wide range of contexts. I will explain the concept and its applications in the areas of health and dementia care, safety and sustainability.

The idea and concept of mindful design emerged initially from my observations of social interactions around objects, and how they were facilitated and changed through design. Exploring this idea during my MA through my craft practice using the form of drinking vessels as the ultimate convivial artefact, I then





pursued the theoretical development of the concept of mindful design during my PhD study. My observation was that objects within social interaction could have a beneficial influence but often did not, which led me to investigate what caused the differences. This in turn led me to the concept of mindfulness and the search of how to embed mindfulness in people's everyday lives through design.

In subsequent work funded by the AHRC in 2014, I have sought to locate the idea of mindful design in the then emerging wider contexts of design for behaviour change, ethical design and design for social responsibility. In our edited book *Design for Behaviour Change* (Niedderer, Clune and Ludden 2017), applications of mindful design in areas of safety, crime prevention, health care and social design have been identified. In a further chapter in the *Handbook of Sustainable Product Design* (Chapman 2017), I argue for the application of mindful design for ecological sustainability.

My most recent project, the European RISE project *Designing for People with Dementia: designing for mindful self-empowerment and social engagement* (2016-2020), has explored the practical application of mindful design in the context of dementia. Its aim is to help people with dementia engage in social contexts to improve psychosocial wellbeing. Utilising the concept of mindful design, the project has investigated innovative design solutions to enable self-empowerment and confidence building of people living with dementia. It has also advanced a research agenda of public engagement through developing and exploring mindful co-design and co-production approaches with people with dementia, formal and informal carers as well as dementia care professionals.

In the talk, I will trace the development of mindful design, its context and applications, through reference to some key experiences and projects and through a number of visual and hands-on experiential examples from our engaged research, including some mindful moments.

## **Professor Kristina Niedderer**

Kristina Niedderer is Professor of Design at Manchester School of Art at Manchester Metropolitan University.

Kristina's research focuses on the role of design to engender mindful interaction and behaviour change. She currently leads the European project 'Designing for people with dementia: designing for mindful self-empowerment and social engagement' (2016-2020), MSCA grant agreement No 691001. Utilising the concept of mindful design, the project investigates innovative design solutions to enable self-empowerment and confidence building of people living with dementia. In 2014, Kristina was principal investigator for the collaborative AHRC funded project 'Creating Sustainable Innovation through Design for Behaviour Change', which led to the publication of the edited book 'Design for Behaviour Change'.



# Professor Sarah Galvani: **The reality is messy: substance use, relationships and power**

---

**Date:** Monday 3rd February 2020

**Time:** Wine reception 5.30pm,  
lecture 6pm

**Location:** GM LT2, Geoffrey Manton  
Building, Rosamond St West,  
Manchester M15 6LL

**Tickets:** Free – See the RAH! website for  
further details

In this inaugural lecture Professor Sarah Galvani will offer reflections on the crucial importance of social research into substance use. Reflecting on lessons from professional practice, Sarah will present how her personal and professional experiences led to a career in social research and her role as the annoying social scientist in a medically dominated field.

Sarah will recount how her early work with Brian, Ruby and Billy, and her lifelong friendship with Emily, set her on the path to research; in particular, to question and move beyond RCTs and epidemiology to get to the lived reality of people's experiences of substance use and attempt to reflect that reality in the results and outputs of her research.

Through examples drawn from over 20 years of research with groups of people on the margins of the margins... she will set out how systems and stereotypes often defeat innovation and good work in



supporting people using substances and the constant need for holding such systems to account. She will talk of her failures and her possible successes in doing so.

Sarah will also talk of the challenges of creating an environment of support that considers the need for systemic change, the need to step around political agendas, and the need to develop for the best possible relationships with people to make a messy situation as supportive as possible.

## **Dr Sarah Galvani, DipSW**

Sarah Galvani is Professor of Social Research and Substance Use, Department of Sociology and Founder and Chair of SUAB Research Group – Manchester Metropolitan University.

Sarah's currently leads work on end of life care for people using substances. This work has grown from an exploratory project to developing an improved model for practice using participatory action research.

Sarah's research relates to the use of substances by more marginalised groups of people. Her work has included the relationship between substance use and sight loss, and substance use in specific minority ethnic communities, for example the Punjabi community. She began her research career exploring alcohol's role in violence to women and retains an interest in domestic and sexual abuse and child to parent violence. She is the UK's leading expert on substance use in social work education and practice.

# Professor Lloyd Strickland: Uncovering Philosophy's “Alternative Facts”

---

**Date:** Monday 23rd March 2020

**Time:** Wine reception 5.30pm,  
lecture 6pm

**Location:** GM LT1, Geoffrey Manton  
Building, Rosamond St West,  
Manchester M15 6LL

**Tickets:** Free – See the RAH! website  
for further details

Those who call for the decolonization of the philosophy curriculum are invariably met with either fervent support or fierce resistance. The resistance typically manifests as a small cluster of objections that seek to deny that true philosophy exists outside of the west. In this talk, Lloyd Strickland, who used some of these objections earlier in his career and has



been on the receiving end of them in recent years, traces their roots to one of the darker and more disturbing corners of philosophy's past. He reveals the agenda that led to the formation of these objections, how they started life as what today would be called “alternative facts,” and how they nevertheless became so widely accepted and respected that even today they are routinely used to frustrate efforts to broaden the syllabus.

## Professor Lloyd Strickland

Lloyd Strickland gained his PhD from Lancaster University in 2005. He held temporary teaching posts at Lancaster and Uclan (2005 & 2006) then worked in IT. He returned to academia with a temporary lectureship at the University of Wales, Lampeter (as was), in December 2008, the post being made permanent in August 2009. He joined Manchester Metropolitan University as a senior lecturer in September 2011, and was promoted to Reader in July 2016 and to Professor of Philosophy and Intellectual History in July 2018. To date he has published numerous journal articles, book chapters, and media pieces, and ten books as either author, editor, or translator. In 2017 he was awarded a British Academy mid-career fellowship.



**Join the conversation  
on social media:**

**Cover illustration  
and contents page:  
Olivia Hardman**



@mmu\_rah



facebook.com/manmet.rah



@mmu\_rah



Listen to our new RAH! Podcast on:

SoundCloud

[https://soundcloud.com/mmu\\_rah\\_podcast](https://soundcloud.com/mmu_rah_podcast)



Spotify

[bit.ly/RAHPodcast](https://bit.ly/RAHPodcast)



**More events to be announced!**

Find full event details and ticket information  
on our website: [www.mmu.ac.uk/rah](http://www.mmu.ac.uk/rah)