

## How to use Apple OS X encryption on a USB drive

To apply encryption to your USB drive there are two steps:

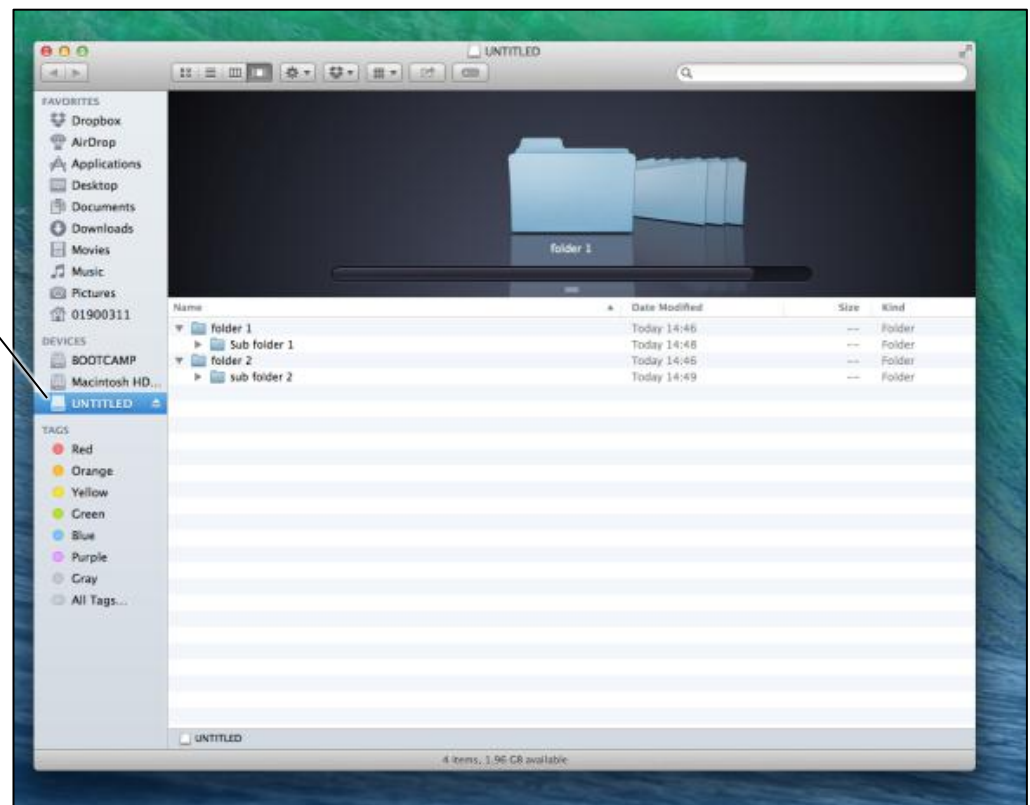
- **Backing-up** the drive
- **Formatting** the drive with encryption

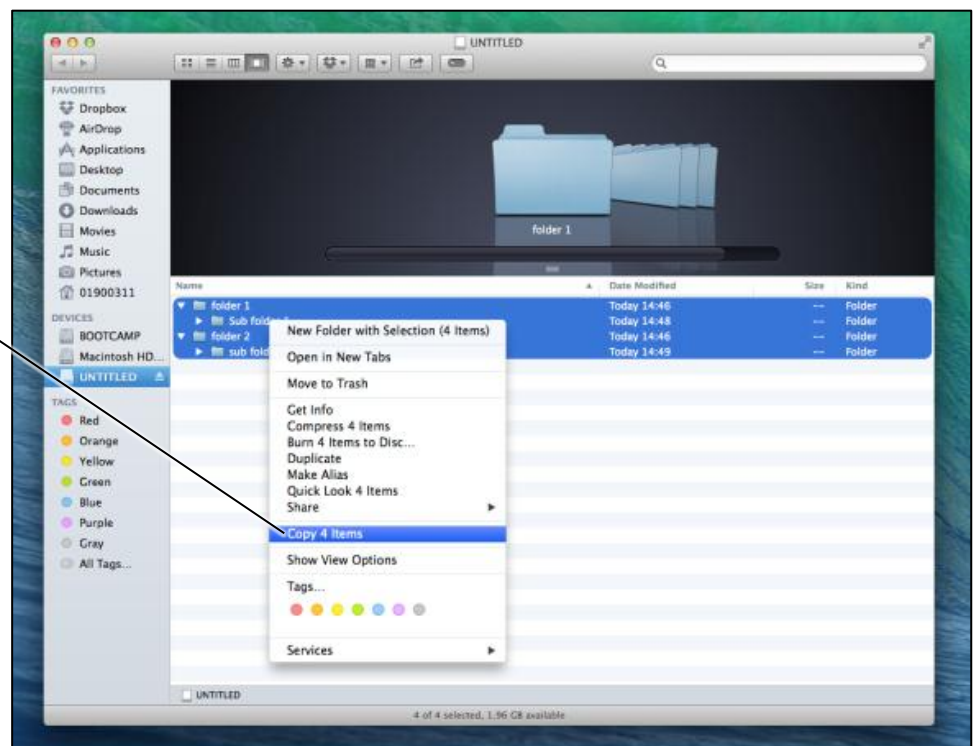
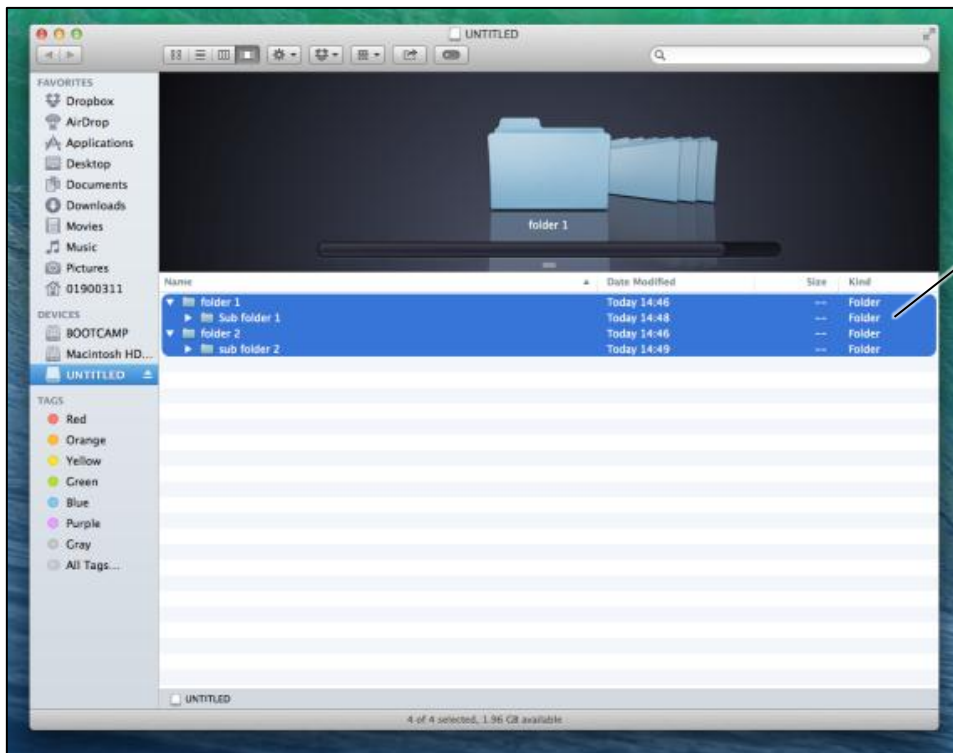
### Back up the contents of the drive

- Open the USB drive in **Finder**
- **Select files** to back up
- Copy items from the **Finder edit menu**
- **Create a folder** on the Mac and give it a name – this is where you will copy your files to
- From the Finder edit menu, **paste** the items – you have now backed-up the files
- Check all your files have copied

**Double-check** as you are about to wipe the source files from the USB drive.

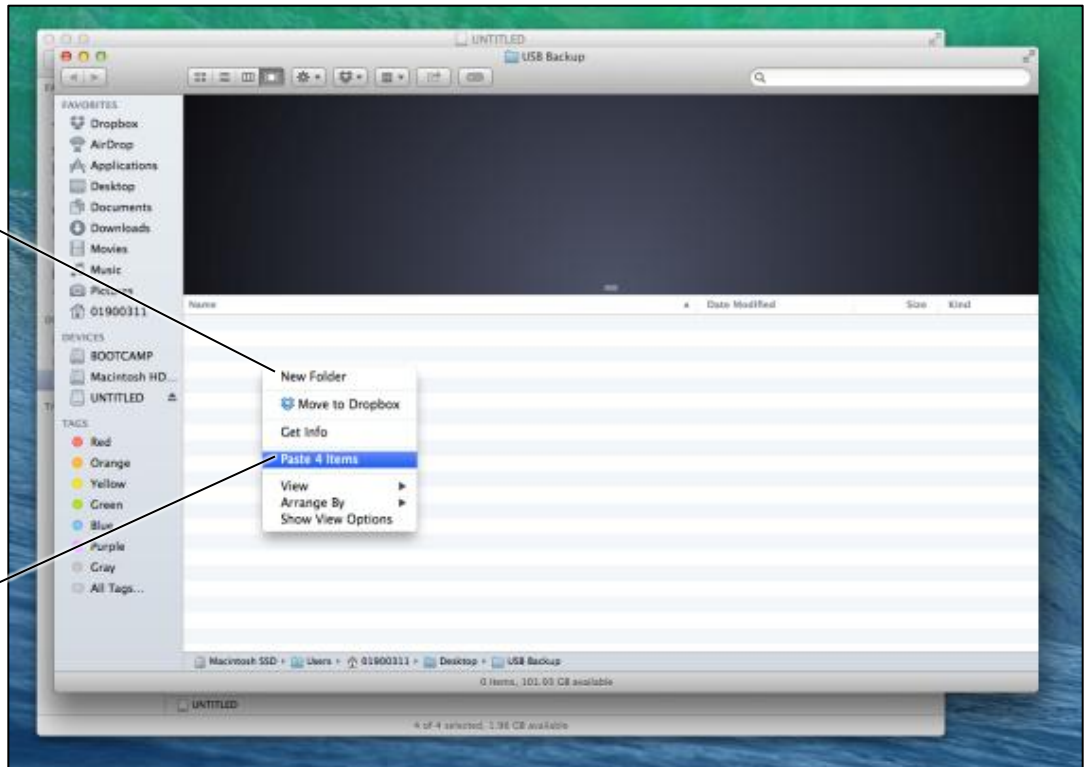
Open the USB  
drive in Finder



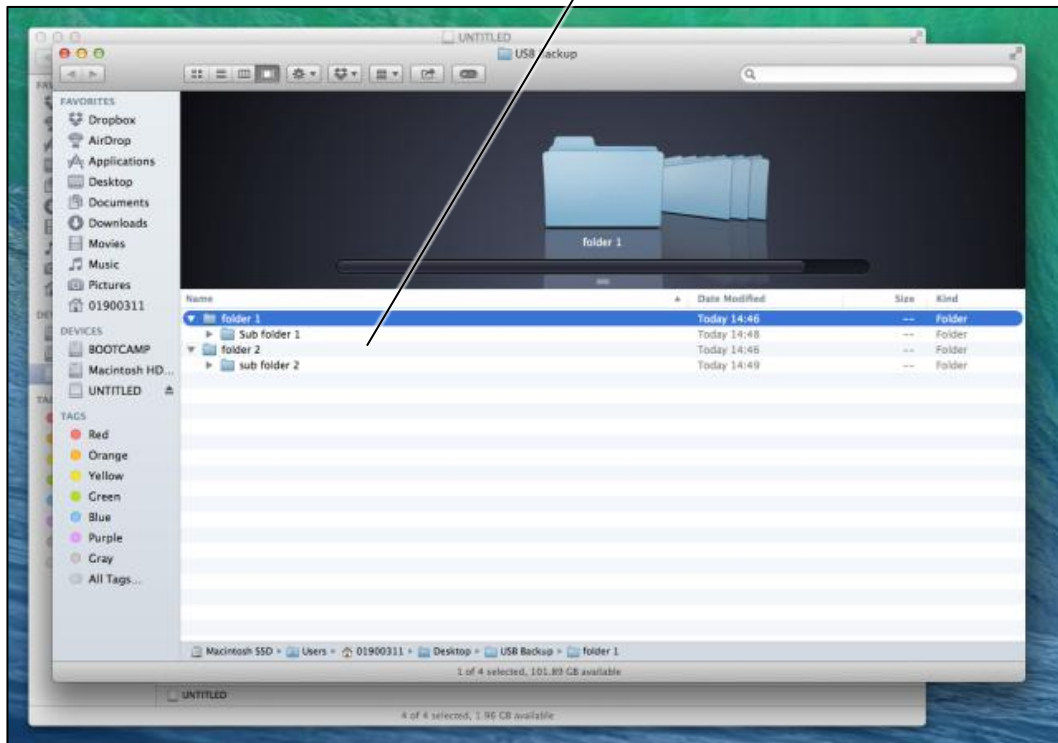


Create a folder on the Mac and give it a name – this is where you will copy your files to

From the **Finder** edit menu, **paste** the items – you have now backed up the files



Check all your files have copied – **double-check** as you are about to wipe the source files from the USB drive



## Format the USB drive

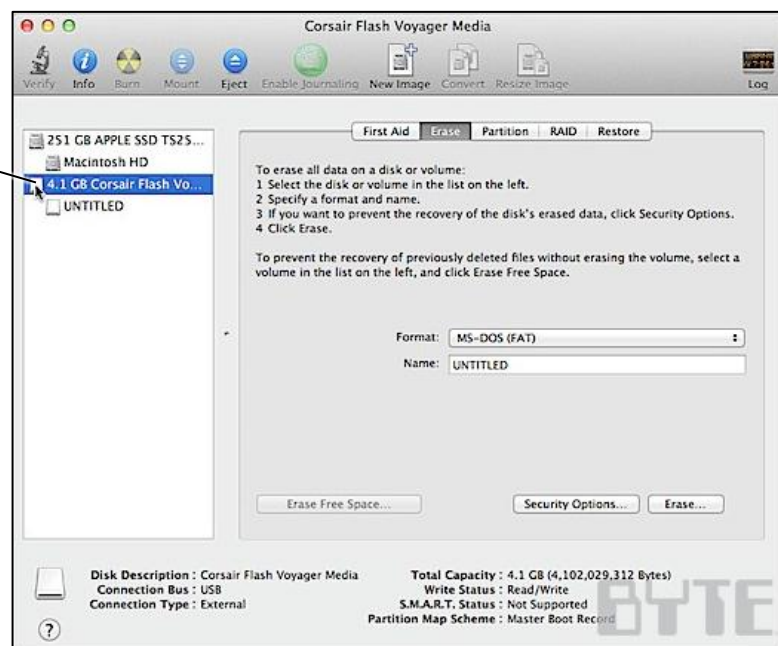
- Run **disk utility** from **applications, utilities**
- Select your USB drive
- Select the **erase** tab
- Choose **Mac OS extended (journaled encrypted)** from the **format menu**
- Press the **erase** button
- Confirm the erase and enter a **password** when prompted

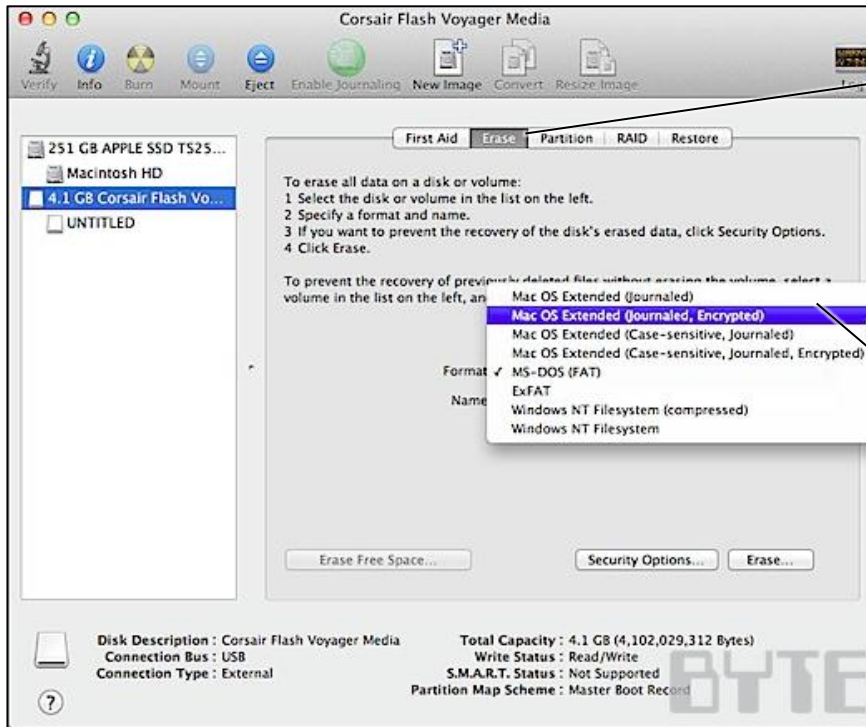
The disk will take a few minutes to format. The time taken will vary depending on the size of the disk.



Run **disk utility** from applications, utilities

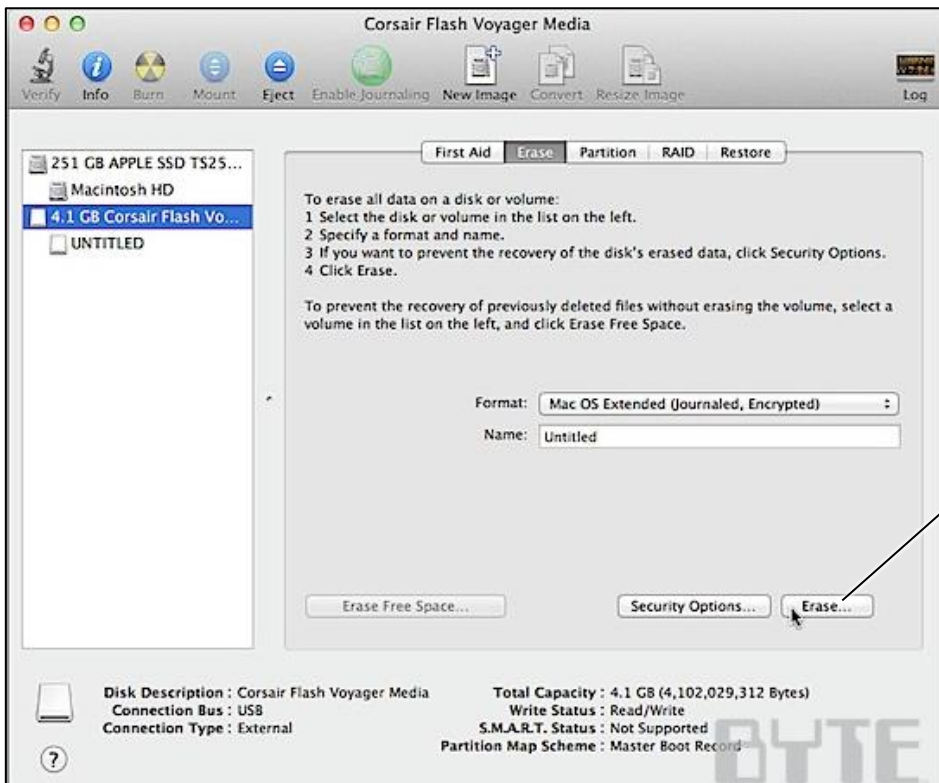
Select your USB drive



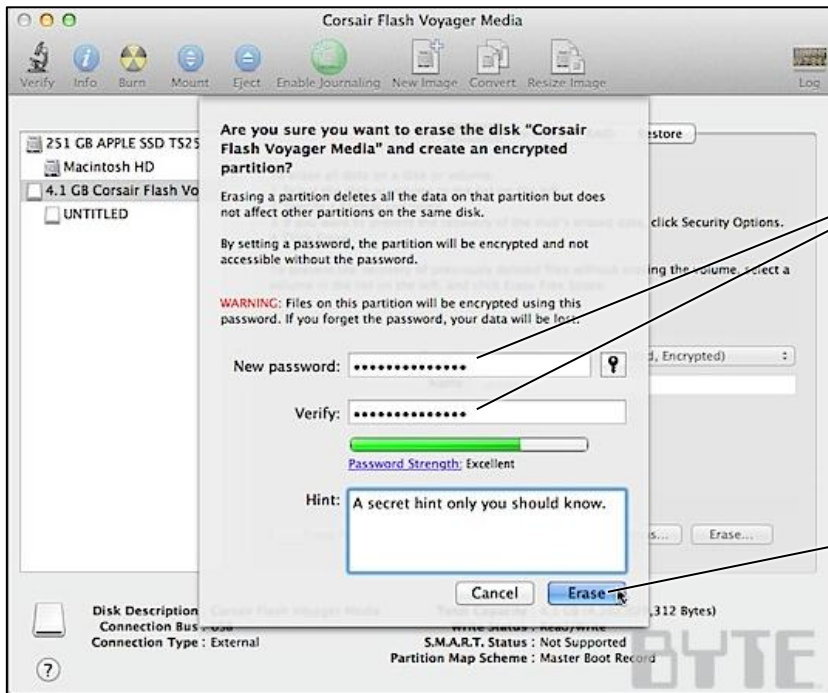


Select the **erase** tab

Choose **Mac OS extended (journaled, encrypted)** from the **format** menu

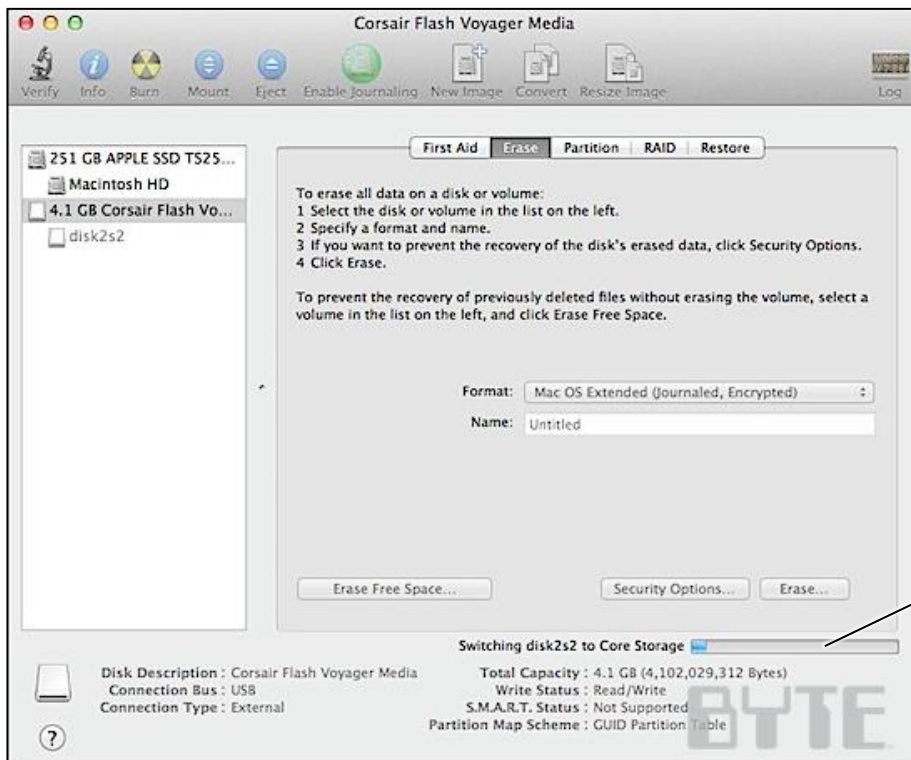


Press the **erase** button



Enter a **password**

Press **erase**



The disk will take a little while to format – the length of time will depend on the size of the drive

## Using an encrypted drive

The encrypted disk will need to be unlocked every time it is plugged in to a Mac, by entering the same password you created before erasing the disk.



Each time you plug the disk in, type in the **password** you created before

Click **unlock** to open the drive