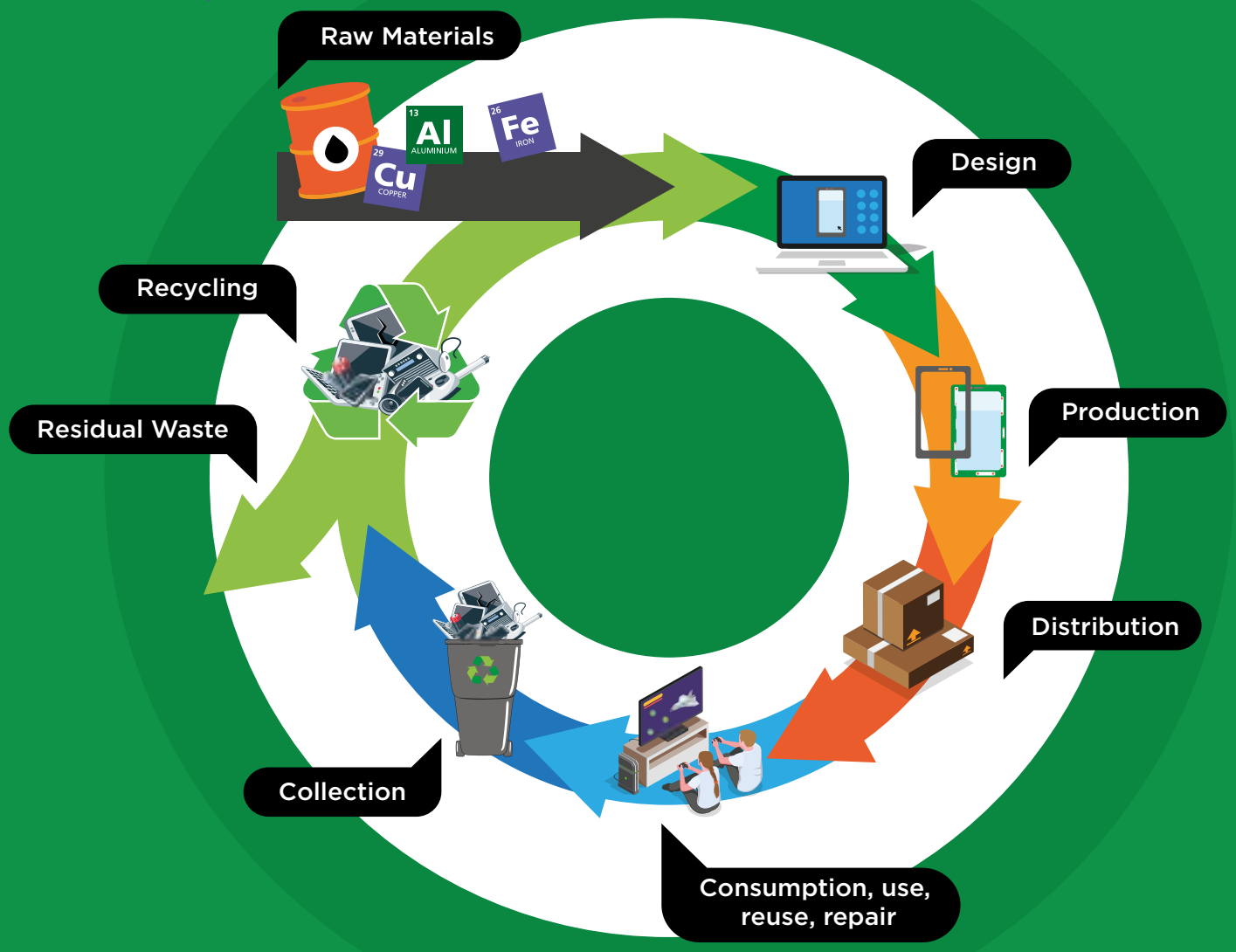


OPPORTUNITY TO DESIGN AND BUILD INDUSTRY SPONSORED SCULPTURE

Submit your entry by 25 / 11 / 2021



REPIC

repic.co.uk

REPIC is an organisation that works on behalf of manufacturers of household electrical and electronic equipment (EEE) in the UK to collect, treat and responsibly recycle used electricals in dedicated treatment plants. Through this process, various component materials can be salvaged, handled safely and converted into new, usable raw materials, achieving a circular economy.

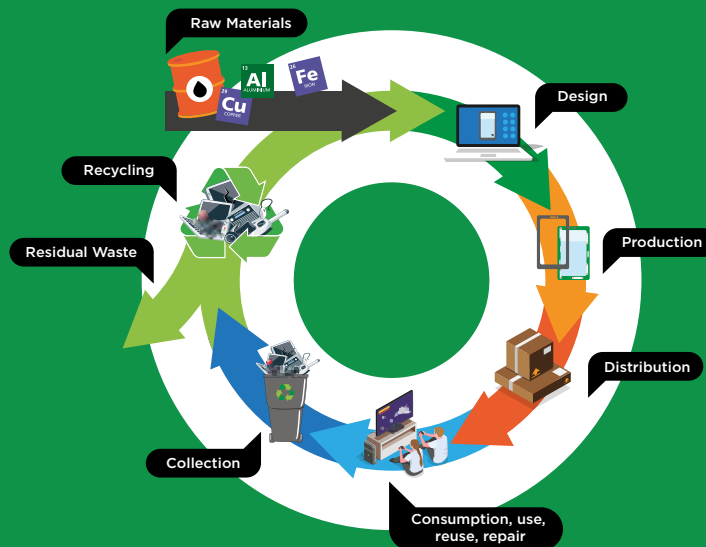
The Brief

To bring greater awareness to their important work, REPIC would like to commission the creation of a three-dimensional sculpture made exclusively* from components and materials sourced from used electrical or electronic appliances and equipment. The piece will serve as a central focus for outreach, educational and promotional events, representing REPIC's vision and values:

- **Responsible Recycling**
- **A healthy and safe environment**
- **Collaboration and partnership**
- **Circular economy**

*Allowances will be made for connective materials used to hold the sculpture together.

The exhibitions and conferences that the piece will be displayed at are well attended by leading industry representatives and the public sector. It will inspire people to think about and understand the role that the reuse and recycling of waste electricals play in the circular economy. An example of the circular economy is shown below.



To facilitate its transportation to various events, the piece should be sufficiently small and lightweight to be portable for one person. It should be no more than 15kg and, as part of the design, how the piece will be packaged and carried should be factored into the design. The carrier could be a suitcase or bag on wheels, or some other form of container on wheels, which will be provided by REPIC. The piece will be sited on a table at events and displayed on a table or cabinet in the REPIC office for visitors to see when not touring. The piece will be displayed with the name of the artist and a short synopsis.

The piece may be static or have moving parts, however, it should not contain anything which could cause harm or start a fire. It should not have sharp edges or use heating components. Some parts of WEEE may contain substances which when released to the environment are polluting or hazardous. For instance, fridges and freezers may contain CFCs which have more global warming potential than carbon dioxide itself. Older TVs may contain lead or mercury. REPIC will provide used products and components which do not cause risk of pollution or harm to human health. Detailed guidance will be provided on how to manage any waste arising from the creation of the artwork. The winning student must adhere to the Manchester Met procedures for waste management.

The piece should avoid the use of brand names.

REPIC

repic.co.uk

Submissions

Entries should be submitted electronically to sdownes@repic.co.uk by 25th November 2021. Submissions should include a clear image/s of your proposed design, which may be in the form of an illustration, technical or CAD drawing (submitted in PDF, JPEG or PNG file format). Please remember to annotate and label your images to illustrate what each of the parts are and what electrical or electronic products they are derived from. Accompanying your images should be answers to the following questions:

How does your design embody REPIC and the company's values?

What was the inspiration behind your design?

Which items of electrical appliances or electronic products are incorporated into your design and why?

The Winning Design

The submissions will be judged by a panel including Manchester Met and REPIC Ltd. The winning designer will be notified on 9th December. Depending on the complexity of the construction and sourcing of products, a deadline to create the sculpture will be agreed of around 6-8 weeks. REPIC will supply the used electrical products or components to an agreed location at Manchester Met.

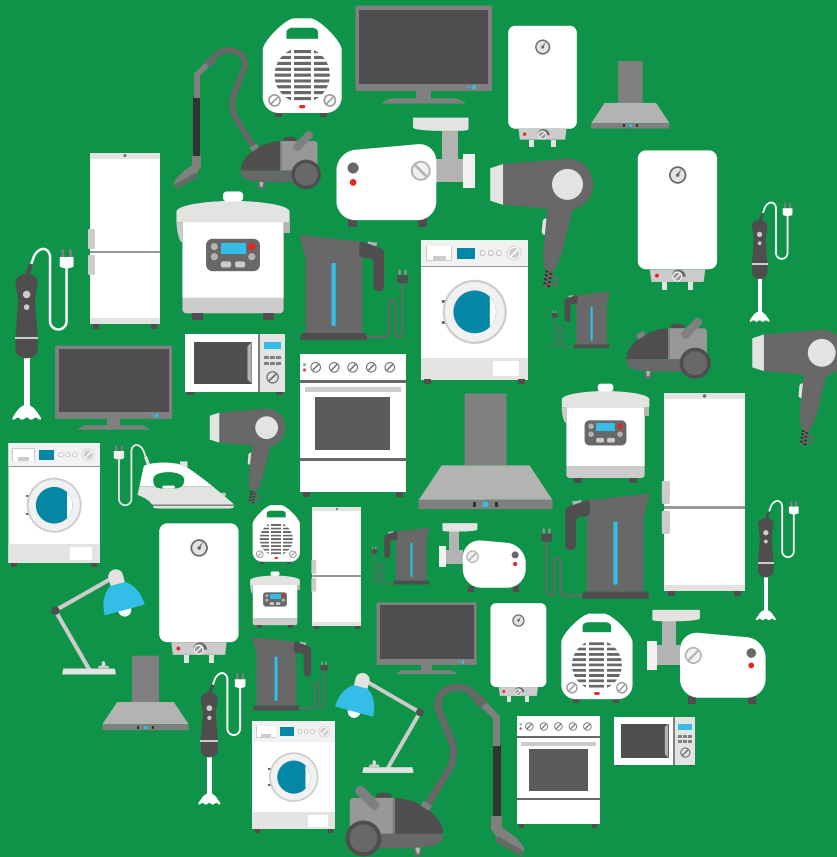
A socially distant or virtual unveiling and photo shoot will be held with the judges. Manchester Met and REPIC will promote this event.

REPIC

repic.co.uk

Context

Household electrical and electronic equipment (EEE) includes the types of products shown



Household waste electrical and electronic equipment (WEEE) includes the types of products shown above. It is anything which requires electricity to work, either through a power lead or cable, or a battery. It includes:

- **Large household appliances like washing machines**
- **Kitchen appliances like coffee machines, kettles and toasters**
- **Old stereos, CD players, MP3 players, record players and DVD players**
- **Phones, computers, tablets and laptops**
- **Games consoles and remote controlled toys**
- **Hairdryers, electric toothbrushes, shavers and straighteners**
- **Electric tools.**

A useful guide to what types of products are classified as WEEE is shown at the Recycle Your Electricals website <https://www.recycleyourelectricals.org.uk/how-to-recycle-electronics/what-electronics-can-be-recycled/>

For further information please contact sdownes@repic.co.uk

REPIC

[repic.co.uk](https://www.repic.co.uk)