



**Manchester
Metropolitan
University**

UNDERGRADUATE

MINI GUIDE 2023

BE YOUR BEST

CONTENTS

- 3 Discover the possibilities
- 4-5 Hear from our students
- 6-7 Be part of our student community
- 8-9 Welcome to Manchester
- 10-11 Your accommodation
- 12-13 Student support services
- 14-15 Equipped for employment
- 16 Fees, loans and living costs
- 17 Dates to note and deadlines to remember
- 18 Our graduate stories
- 19-31 Our course listings

This printed mini guide was developed in early 2022 to help you choose the right university for a start in the 2023/2024 academic year. Whilst every effort has been made to ensure its content is up to date and accurate, the University cannot accept liability for information which, despite our reasonable efforts, may be inaccurate for any reason. An up-to-date online prospectus is available at mmu.ac.uk/courses

As at the date of publication of this mini guide our campus is open as normal and teaching is in person. The University follows Government COVID-19 guidance to keep you and our staff safe, and if our operations and course delivery change due to Government COVID-19 guidance we will provide updates on our website at mmu.ac.uk/your-experience and we recommend that you check out this link to find any updated information.



EXPLORE OUR PROSPECTUS

Read all about Manchester Metropolitan University – from the courses you'll study, to the accommodation where you'll stay, to the city you'll get to know.

Order your prospectus
mmu.ac.uk/yourprospectus

YOUR FUTURE STARTS HERE

Discover the possibilities

BOOK AN OPEN DAY

Open days are a chance to get a taste of everything Manchester Met. Get a feel for university life. Hear about the course that's right for you. Chat with the staff who'll take you through your studies. Talk to students like you about their experiences, recommendations and thoughts about life here. Take a tour and take a look at our accommodation.

It's all waiting for you. Join us, picture yourself here and turn your university dreams into plans.

Open Days

Wednesday 22 June 2022

Saturday 8 October 2022

Saturday 15 October 2022

Saturday 26 November 2022

Book your place at

mmu.ac.uk/openday

TAKE A VIRTUAL TOUR

Visit our Virtual Experience to take a good look inside our buildings with 360° views around campus. Start your tour at

virtualexperience.mmu.ac.uk

DISCOVER YOUR COURSE

We have hundreds of different courses to choose from.

Just visit

mmu.ac.uk/undergraduate

ASK US A QUESTION

You're bound to have lots of questions about studying here. Our Course Enquiries Team will help you find the answers. Whatever you need to know about applying to study with us, they're ready to support you.

mmu.ac.uk/course-enquiry

0161 247 6969



KYLA SCHNEEBERGER

BA (Hons) TESOL with Modern Standard Arabic*

"I am originally from Switzerland and want to become an English Language teacher. I like all the facilities and extra-curricular activities that make university enjoyable. I love the free sessions that Manchester Met Sport offer during term times."



NIAMH ROBERTS

BSc (Hons) Psychology

"I'm from Wrexham, Wales. There are lots of nice restaurants, bars and cafés on Oxford Road which are very close to the University's main campus."

Alongside my degree I work part-time for the on-campus job agency, Jobs4Students. Manchester Met has a big focus on employability skills which I think is very helpful."

*This course has been discontinued and replaced with BA (Hons) Teaching English to Speakers of Other Languages (with a modern language) (French, Japanese, Mandarin Chinese, Modern Standard Arabic or Spanish).



TOM IBBOTT

**BA (Hons) Primary Education
with QTS**

"I am a proud Yorkshireman from the beautiful city of York. For me, Manchester Met ticked all of my boxes.

Three words to sum up my university experience are; hilarious, hardworking, and life-changing."



JULAN WALTERS

BA (Hons) Business/Economics*

"My favourite thing about the Manchester Met campus is the Students' Union. It is a good place to escape from education for a short while and relax whilst watching sports and socialising with friends.

My favourite place is Old Trafford Football Ground. I really enjoy watching football and I attend a lot of the games."

*This course has been discontinued and replaced with BA (Hons) Economics.

MANCHESTER MET VOICES

If you want to know about Manchester Met, our students are the best people to ask. Throughout this guide, you'll find out just what they think about our University, their accommodation and their lives in the city. You can also ask our student ambassadors about their experiences at Manchester Met online at

mmu.ac.uk/chatwithus

FIT RIGHT IN

Be part of our student community



Coming here is about more than exploring your chosen subject and preparing for your professional life. It's also about belonging. Every year thousands choose Manchester Met, with students from every walk of life. It's your chance for an experience like no other.

TOM IBBOTT

**BA (Hons) Primary Education
with QTS**

"A whole range of things contributed to my decision to come and study at Manchester Met. I was blown away by all the facilities and passionate tutors that want to share their wealth of knowledge and experiences.

I have always maintained that the Manchester Met campus is unique, due to just how close-by every building is. Apart from Brooks, which is a ten-minute walk away, all the University buildings are a stone's throw away from each other."

KYLA SCHNEEBERGER

**BA (Hons) TESOL with Modern
Standard Arabic**

"Very simple things that make my life easier are the on-campus prayer room and the halal meat sandwiches available in the cafés around university."



**The Union is a great place
to meet people with over
135 sports clubs and societies
ready to welcome you.**



**THE UK's
GREENEST
University***

**around
40,000
students****

* Ranked 1st in the People and Planet University League 2021.

**Compiled from HESA data 2020/21, including students on distance learning courses and accredited courses at partner institutions.

KYLA'S TYPICAL TUESDAY

9-11am

Lecture in Geoffrey Manton Building.

11am-12pm

Free time (chat with my friends, studying, prayer).

Around 12pm

Lunch with my friends somewhere around university or in town.

1.30pm

Library time.

6pm

Active Campus fitness class.

7pm

Home or dinner with friends.

A CITY LIKE NO OTHER

Welcome to Manchester

Manchester is a city of opportunity, a northern powerhouse that many see as the nation's true second capital.

It's an energetic city, bustling night and day with its ever-growing food and drink scene and some of Britain's best culture.

And Manchester Metropolitan University is a proud part of it, just a ten-minute walk from the city centre.

TOM IBBOTT

BA (Hons) Primary Education with QTS

"I love Manchester! The whole vibe of the city is amazing and there is a real community feel about the place. Over my years at university, I have discovered a lot of hidden treasures and great places.

I massively recommend Junkyard Golf Club for a good evening with friends. This was one of the first places I went to get to know my coursemates. It's walking distance from Manchester Met and provides a range of fun crazy golf courses."



MANCHESTER RANKED
 **3RD BEST
CITY
IN THE WORLD***

*TimeOut poll September 2021.




Medieval Quarter



Cultural Arts Venue HOME, First Street

 **Main campus to
Brooks building**
5-10 mins walk

 **Main campus
to city centre**
10 mins walk

 Metrolink tram

 Train station

Discover more about
Manchester at
mmu.ac.uk/city



MAKE YOURSELF AT HOME

Your accommodation

Student accommodation is a supportive community where a range of students from a variety of courses are encouraged to mix. Together, they learn to respect one another's needs and develop a successful balance between academic and social life.

Whether you feel at home in an environmentally sustainable eco-townhouse, an en-suite flat share or a traditional room in halls, your home from home will play a big part in your university experience. It's so much more than simply a place to stay.

If you want to see more of our accommodation, you can explore your options at one of our open days. Until then, you can see virtual tours, advice and costs at mmu.ac.uk/accommodation

TOM IBBOTT
BA (Hons) Primary Education
with QTS

"During my first year, I lived in a 12-person house in the University's Birley accommodation. It was a sociable year full of laughs and good friends."

NIAMH ROBERTS
BSc (Hons) Psychology

"Living in university accommodation is fun, and you meet loads of new people. It is a great experience and improves your independence. My advice would be to make the most of every opportunity to meet people and try to socialise with your flatmates because you're all in the same situation. Manchester Met has Residential Advisers who are students and they put on a variety of events where you can meet other people who are studying at Manchester Met.

You can also speak to members of the Residential Life team if you have any questions and they will support your transition into accommodation."

100%
GUARANTEED
ACCOMMODATION

We guarantee to make an offer of University-approved accommodation to all full-time undergraduate students studying at Manchester Metropolitan University for the first time.*

*For applications made before the accommodation deadline. Full details of eligibility, terms and conditions, and deadlines can be found at mmu.ac.uk/accommodation



HERE TO LEND A HELPING HAND

Student support services

Arriving on campus to make a start on your studies is exciting. For many, it can also be quite daunting – no matter how far you've come and no matter how confident you are about the work ahead of you.

But you won't be alone. Here, you'll be part of a strong, supportive community that's tens of thousands strong. From flatmates and teammates, to your course and your Students' Union, you'll soon make the connections and build the friendships that will make sure you feel like you belong.

But if you ever need any help and support – whether it's the day you get here or the day you graduate in a few years' time – you'll find that there are all sorts of options for finding what you need. Big questions, nagging problems or admin issues – our award-winning Student Hubs are the places to go for advice. Head to our Digital Student Hub to find answers to hundreds of frequently asked questions. If you can't find what you're looking for, you can phone for advice, submit an online enquiry, or go to one of the Student

Hubs in the Business School or Brooks Building to chat with a friendly adviser. For every aspect of student life, we're here to support you.

mmu.ac.uk/support

FIRST GENERATION

If you live or study in the North West of England, and are the first in your family to go to university, our award-winning* First Generation Scholarship Programme will help you to reach your potential with us. By guiding you through the application process, and providing assistance throughout your studies, we're here to support you on your journey.

Find out more at
mmu.ac.uk/firstgen

1ST
GENERATION

*Winner, Times Higher Education Awards 2021 for Widening Participation or Outreach Initiative of the Year.





"We put students at the heart of what we do. We have a students first attitude and design our services to meet their needs. We are responsive, caring, empathetic and always go the extra mile."

Jenny Clough
Director of Student Services

JULAN WALTERS

BA (Hons) Business/Economics

"The First Generation Scheme made my university experience a lot easier as I got to know the University and its campus before I joined.

My advice for any students who are eligible for the scheme is do it!"

NIAMH ROBERTS

BSc (Hons) Psychology

"There is a variety of support from the University, such as Wellbeing Advisers, a Counselling Service, Residential Advisers and support from the Students' Union.

As well as academic and pastoral support, there's also regular updates about job vacancies that are relevant to you, and the careers service can assist you with finding graduate jobs which helps you to feel prepared and well-supported for when you finish your degree."

FOCUSED ON YOUR FUTURE

Equipped for employment



We're here to make you ready for the workplace. Our courses are designed to equip you for your chosen path, while our careers service offers expert advice, job-hunting skills and an in-depth understanding of the jobs market.

Your five-year plan is at the heart of our careers support. We work with you to decide on the goals that can help you shape your career path towards employment or further study.

You will also be able to get involved with our award-winning** RISE programme, which encourages you to step out of your discipline and join extra-curricular projects or collaborations that could earn you extra degree credits. So, by the time you graduate, you should have everything you need to explore new opportunities and take the first steps in your career.

mmu.ac.uk/careers

93% 

of graduates are employed/in further education approximately 15 months after graduation*

*93% of our UK full-time first degree graduates are employed or in further education 15 months after graduation. Graduate Outcomes survey 2018/19 graduates – UK, full-time, first degree respondents only. Based upon the Guardian Prospects calculation. Contains HESA data © HESA 2020 (www.hesa.ac.uk).

**Winner, Guardian University Awards 2020 for Course Design, Retention and Student Outcomes.

NIAMH ROBERTS

BSc (Hons) Psychology

"The best thing about Manchester Met is the support available to students and the opportunities provided to develop your skills. This is provided on my course and within the wider University."

TOM IBBOTT

BA (Hons) Primary Education with QTS

"One huge benefit of my course is that many of the staff are former teachers, so they have experience and knowledge to share.

The tutors demonstrate their passions through a range of different teaching methods, which have certainly influenced the way that I approach teaching when I am with my class on placement."

MONEY MATTERS

Fees, loans and living costs

Coming to university is an investment in your future. It doesn't just offer a career-shaping qualification, but a life-shaping experience too.

As well as the cost of your tuition fees, you'll need to cover living costs – everything from rent and food, to course materials and clothing.

You may be eligible to apply for student finance to help cover these costs. Find out more at mmu.ac.uk/funding-your-studies

Manchester Met currently offers a £750 per year Student Support Package for new, full-time, first year undergraduate students who are starting their course in the academic year 2022/23 and have a household income of £25,000 or less. We review this every year and the latest information can be found online at mmu.ac.uk/student-support-package

KYLA SCHNEEBERGER

BA (Hons) TESOL with Modern Standard Arabic

"It is essential to set yourself limits, to establish a certain amount of money to spend that you cannot exceed each month. That way you also save some money that you can use in case of an emergency or if you really want to buy something specific. You should also try to plan your week in terms of activities and grocery shopping so that you can have a rough estimation of how much you will spend."



THE COUNTDOWN STARTS NOW

Dates to note and deadlines to remember

2022

MARCH - SEPTEMBER

Talk to us at UCAS fairs, take the time to look through all the details available on our website and find out all you can about the course that's right for you.

22 JUNE

Open day. Explore Manchester Met and discover your course. Book your place at mmu.ac.uk/openday

SEPTEMBER

Applications open. You don't need to wait until the last minute. If you know what you want to study, apply via ucas.com

SEPTEMBER - DECEMBER

Take some time to craft your personal statement. It could make all the difference for getting on to your ideal course.

8 AND 15 OCTOBER

Open days. Come along and see everything Manchester Met has to offer. Book your place at mmu.ac.uk/openday

26 NOVEMBER

Last open day before the UCAS initial deadline. You might not get another chance to visit our campus before it's crunch time. Get booking at mmu.ac.uk/openday

2023

25 JANUARY

UCAS initial deadline. Time to get your application in to guarantee it is considered.

FEBRUARY

Student Finance England usually opens for applications in late February. You can apply through gov.uk/student-finance

FEBRUARY - MAY

Applicant visit days. When we make an offer, for most courses, we also invite you along to visit us to find out all about your chosen course.

MARCH

Accommodation applications open. As soon as you're set on coming to Manchester Met, it's time to get your accommodation sorted. mmu.ac.uk/accommodation

MAY

Finance deadline. To make sure you receive your student finance by the start of term, you usually need to have applied by the end of May. Apply for student finance at gov.uk/student-finance

JUNE

Decision time. You will usually have until June to make decisions on any offers you receive. Check your own deadline at ucas.com

JULY - AUGUST

Results time. Do you have the grades for your conditional offer? It's time to find out. If you're still looking for a place, visit mmu.ac.uk/clearing

AUGUST

If you applied for University accommodation, we'll get in touch to confirm where you'll be living.

SEPTEMBER

Get started. Our welcome programme will give you the chance to meet new friends, get settled on campus and get started on your studies.

SUCCESS STORIES START HERE

Our graduate stories



NATHAN LAWRENSON

**BA (Hons) Sports Marketing
Management**

**Partnerships Activation Manager,
Destination Sport Group**

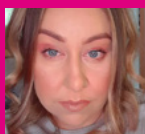
"I spent a year on placement as a Partnerships Intern at Liverpool Football Club. Upon graduation, I had a couple of different options including the opportunity to get back into football but gladly accepted a role of Partnerships Manager at Wigan Warriors."



ABIGAIL SCOTT

**BSc (Hons) Speech Pathology and
Therapy****
Speech and Language Therapist

"I am so grateful for the in-depth teaching I received on the science behind communication difficulties, as this helps me to explain the children's difficulties to parents and school staff. My knowledge of how children typically develop is also something I constantly rely on."

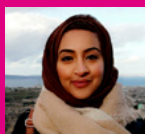


STACEY GREGORY

**BA (Hons) Clothing Design
and Technology***

QA Manager at Boohoo.com

"Manchester Met was not only a great social experience for me, it also gave me a great basis for my start on the career ladder."



NEELAM SHAH

BA (Hons) Primary Education
Teacher at Primary School

"I have gained many skills from Manchester Met – I am much more organised and manage my time effectively. I can hold a conversation with professionals and feel confident to approach different people from different backgrounds. Participating in group work at university has enabled me to negotiate with people more effectively as well as respect and appreciate other opinions."

* This course has been discontinued and replaced with BA (Hons) Fashion Design and Technology.

**This course has been discontinued and replaced with BA (Hons) Speech and Language Therapy.

FIND THE SUBJECT THAT'S RIGHT FOR YOU

Accounting, Finance and Banking	20
Acting, Drama and Performance	20
Architecture	20
Art and Design	20
Biological Sciences	20
Biomedical and Physiological Sciences	21
Business and Management	21
Business Technology	22
Chemistry	22
Childhood and Education Studies	22
Computer Games and Animation	22
Computing	22
Digital Arts and Media	23
Digital Media and Communications	23
Economics and International Business	23
Engineering and Product Design	23
English, Film Studies and Creative Writing	24
Fashion	24
Geography and the Environment	25
Health, Social Care and Social Work	25
History	25
Human Resource Management and Business Psychology	25
Journalism	26
Languages, Linguistics and Teaching English to Speakers of Other Languages	26
Law	27
Marketing, Brand and Advertising	27
Mathematics	28
Nursing	28
Nutrition	28
Philosophy	28
Physiotherapy and Speech and Language Therapy	29
Politics and International Relations	29
Psychology	29
Sociology and Criminology	30
Sport and Exercise Sciences	30
Sports Business Management and Sports Marketing Management	30
Teaching	30
Tourism, Events and Hospitality Management	31
Degree Apprenticeships	31

ACCOUNTING, FINANCE AND BANKING

Degree title	UCAS Points	Specific Subject	GCSE grade C or 4 in	Placement Year	Study Abroad	Foundation Year
BSc (Hons) Accounting and Finance	104-112	-	English & Maths	†	†	✓
BSc (Hons) Banking and Finance	104-112	-	English & Maths	†	†	✓

† Placement year and/or study abroad options may be available, potentially extending the duration of study up to 4 years. Study abroad will be subject to any international travel restrictions and/or availability see mmu.ac.uk/courses

ACTING, DRAMA AND PERFORMANCE

Degree title	UCAS Points	Specific Subject	GCSE grade C or 4 in	Placement Year	Study Abroad	Foundation Year
BA (Hons) Acting*	104-112	-	English	✗	✗	✗
BA (Hons) Drama and Contemporary Performance**	104-112	-	English	✗	✗	✗

* Eligible applicants will be invited to audition as part of the application process.

** Eligible applicants may be invited to audition or interview as part of the application process.

ARCHITECTURE

Degree title	UCAS Points	Specific Subject	GCSE grade C or 4 in	Placement Year	Study Abroad	Foundation Year
BA (Hons) Architecture*	144	-	English & Maths	✗	✗	✗

* Eligible applicants will be invited to submit a portfolio as part of the application process.

ART AND DESIGN

Degree title	UCAS Points	Specific Subject	GCSE grade C or 4 in	Placement Year	Study Abroad	Foundation Year
UAL Level 3 Foundation Diploma in Art and Design*	48	-	English & Maths	✗	✗	✗
BA (Hons) Art History and Curating	104-112	-	English	†	†	✗
BA (Hons) Fine Art*	104-112	-	English	†	†	✗
BA (Hons) Fine Art and Art History*	104-112	-	English	†	†	✗
BA (Hons) Graphic Design*	104-112	-	English	†	†	✗
BA (Hons) Illustration with Animation*	104-112	-	English	†	†	✗
BA (Hons) Interior Design*	104-112	-	English	†	†	✗
BA (Hons) Product Design*	104-112	-	English	†	†	✗
BA (Hons) Product Design and Craft*	104-112	-	English	†	†	✗
BA (Hons) Textiles in Practice*	104-112	-	English	†	†	✗

* Eligible applicants will be invited to submit a digital portfolio as part of the application process.

† Placement year and/or study abroad options may be available, potentially extending the duration of study up to 4 years. Study abroad will be subject to any international travel restrictions and/or availability see mmu.ac.uk/courses

BIOLOGICAL SCIENCES

Degree title	UCAS Points	Specific Subject	GCSE grade C or 4 in	Placement Year	Study Abroad	Foundation Year
BSc (Hons) Biology	104-112	Biology/Human Biology/ Applied Science	English & Maths	†	†	✓
BSc (Hons) Animal Behaviour and Conservation	104-112	Biology/Human Biology/ Applied Science	English & Maths	†	†	✓

GCSE English requirement is English language or acceptable equivalent.

BIOLOGICAL SCIENCES (CONTINUED)

Degree title	UCAS Points	Specific Subject	GCSE grade C or 4 in	Placement Year	Study Abroad	Foundation Year
BSc (Hons) Microbiology and Molecular Biology	104-112	Biology/Human Biology/ Applied Science	English & Maths	†	†	✓
BSc (Hons) Zoology	104-112	Biology/Human Biology/ Applied Science	English & Maths	†	†	✓

† Placement year and/or study abroad options may be available, potentially extending the duration of study up to 4 years. Study abroad will be subject to any international travel restrictions and/or availability see mmu.ac.uk/courses

BIOMEDICAL AND PHYSIOLOGICAL SCIENCES

Degree title	UCAS Points	Specific Subject	GCSE grade C or 4 in	Placement Year	Study Abroad	Foundation Year
M BioMed Sci (Hons) Biomedical Science	120	Biology/Human Biology/ Applied Science	English & Maths	✗	✗	✗
BSc (Hons) Biomedical Science*	104-112	Biology/Human Biology/ Applied Science	English & Maths	†	✗	✓
BSc (Hons) Healthcare Science (Physiological Sciences)** ‡	120	Biology/Human Biology/ Applied Science	English & Maths	✗	✗	✗
BSc (Hons) Human Biosciences	104-112	Biology/Human Biology	English & Maths	†	✗	✓
BSc (Hons) Human Physiology	104-112	Biology/Human Biology	English & Maths	†	✗	✓

* An exit award of BSc (Hons) Applied Biomedical Science (ABMS) will be available, which is approved by the Health and Care Professions Council (HCPC) and accredited by the Institute of Biomedical Science (IBMS). The award will have a compulsory 120-credit placement year between levels 5 and 6, with graduates from the BSc (Hons) ABMS degree eligible to apply for statutory registration with the HCPC as a 'Biomedical Scientist'.

** Eligible applicants will be asked to attend an interview as part of the admissions process.

‡ Satisfactory Enhanced Disclosure and Barring Service (DBS) and/or occupational health clearance is also required to participate in this course. For further information visit mmu.ac.uk/courses

† Placement year and/or study abroad options may be available, potentially extending the duration of study up to 4 years. Study abroad will be subject to any international travel restrictions and/or availability see mmu.ac.uk/courses

BUSINESS AND MANAGEMENT

Degree title	UCAS Points	Specific Subject	GCSE grade C or 4 in	Placement Year	Study Abroad	Foundation Year
BA (Hons) Business Management	104-112	-	English & Maths	†	†	✓
BA (Hons) Business Psychology	104-112	-	English & Maths	†	†	✓
BSc (Hons) Business Technology	104-112	-	English & Maths	†	†	✓
BA (Hons) Business and Human Resource Management	104-112	-	English & Maths	†	†	✓
BA (Hons) Business and Marketing	112	-	English & Maths	†	†	✗
BA (Hons) International Business Management	104-112	-	English & Maths	†	†	✓
BA (Hons) Business Management with Law	104-112	-	English & Maths	†	†	✗
BA (Hons) Business Management and French	104-112	French	English & Maths	◆	◆	✓
BA (Hons) Business Management and Spanish	104-112	Spanish	English & Maths	◆	◆	✓
BA (Hons) Business Management (with a modern language)(French, Japanese, Mandarin Chinese, Modern Standard Arabic or Spanish)	104-112	See mmu.ac.uk/courses	English & Maths	†	†	✓

† Placement year and/or study abroad options may be available, potentially extending the duration of study up to 4 years. Study abroad will be subject to any international travel restrictions and/or availability see mmu.ac.uk/courses

◆ Period of residence abroad/placement will take place in a French or Spanish-speaking country and will be subject to any international travel restrictions and/or availability see mmu.ac.uk/courses

As well as the option of a year abroad as part of a 4-year or 5-year course, many of our degree programmes also offer options to study abroad for a shorter period of time. Please visit mmu.ac.uk/exchange for further information.

BUSINESS TECHNOLOGY

Degree title	UCAS Points	Specific Subject	GCSE grade C or 4 in	Placement Year	Study Abroad	Foundation Year
BSc (Hons) Business Technology	104-112	-	English & Maths	†	†	✓

† Placement year and/or study abroad options may be available, potentially extending the duration of study up to 4 years. Study abroad will be subject to any international travel restrictions and/or availability see mmu.ac.uk/courses

CHEMISTRY

Degree title	UCAS Points	Specific Subject	GCSE grade C or 4 in	Placement Year	Study Abroad	Foundation Year
MChem (Hons) Chemistry	120	Chemistry/ Applied Science	English & Maths	†	✗	✗
MChem (Hons) Pharmaceutical Chemistry	120	Chemistry/ Applied Science	English & Maths	†	✗	✗
BSc (Hons) Chemistry	104-112	Chemistry/ Applied Science	English & Maths	†	†	✓
BSc (Hons) Pharmaceutical Chemistry	104-112	Chemistry/ Applied Science	English & Maths	†	✗	✓

† Placement year and/or study abroad options may be available, potentially extending the duration of study up to 4 years (BSc) or 5 years (MChem). Study abroad will be subject to any international travel restrictions and/or availability see mmu.ac.uk/courses

CHILDHOOD AND EDUCATION STUDIES

Degree title	UCAS Points	Specific Subject	GCSE grade C or 4 in	Placement Year	Study Abroad	Foundation Year
BA (Hons) Early Years and Childhood Studies ‡	104-112	-	English	✗	✗	✓
BA (Hons) Education ‡	104-112	-	English	✗	✗	✓
BSc (Hons) Educational Psychology ‡	112	-	English & Maths	✗	✗	✗

‡ Satisfactory Enhanced Disclosure and Barring Service (DBS) and/or occupational health clearance is also required to participate in this course. For further information visit mmu.ac.uk/courses

COMPUTER GAMES AND ANIMATION

Degree title	UCAS Points	Specific Subject	GCSE grade C or 4 in	Placement Year	Study Abroad	Foundation Year
BSc (Hons) Computer Games Development	112-120	IT/Computing/ Maths/Science	English & Maths	†	✗	✓
BSc (Hons) Computer Animation and Visual Effects	112-120	IT/Computing/ Maths/Science	English & Maths	†	✗	✓

† Placement year and/or study abroad options may be available, potentially extending the duration of study up to 4 years. Study abroad will be subject to any international travel restrictions and/or availability see mmu.ac.uk/courses

COMPUTING

Degree title	UCAS Points	Specific Subject	GCSE grade C or 4 in	Placement Year	Study Abroad	Foundation Year
BSc (Hons) Applied Computing	112-120	IT/Computing/ Maths/Science	English & Maths	†	✗	✓
BSc (Hons) Computer Science	112-120	IT/Computing/ Maths/Science	English & Maths	†	✗	✓
BSc (Hons) AI and Data Science	112-120	IT/Computing/ Maths/Science	English & Maths	†	✗	✓
BSc (Hons) Software Engineering	112-120	IT/Computing/ Maths/Science	English & Maths	†	✗	✓

GCSE English requirement is English language or acceptable equivalent.

COMPUTING (CONTINUED)

Degree title	UCAS Points	Specific Subject	GCSE grade C or 4 in	Placement Year	Study Abroad	Foundation Year
BSc (Hons) Cyber Security	112-120	IT/Computing/Maths/Science	English & Maths	†	✗	✓

† Placement year and/or study abroad options may be available, potentially extending the duration of study up to 4 years. Study abroad will be subject to any international travel restrictions and/or availability see mmu.ac.uk/courses

DIGITAL ARTS AND MEDIA

Degree title	UCAS Points	Specific Subject	GCSE grade C or 4 in	Placement Year	Study Abroad	Foundation Year
BA (Hons) Animation	104-112	-	English	†	†	✓
BA (Hons) Filmmaking*	104-112	-	English	†	†	✓
BA (Hons) Future Media Production	104-112	-	English	†	†	✓
BA (Hons) Games Art	104-112	-	English	†	†	✓
BSc (Hons) Games Design	104-112	-	English	†	†	✓
BA (Hons) Music and Sound Design	104-112	-	English	†	†	✓
BA (Hons) Photography*	104-112	-	English	†	†	✓
BSc (Hons) Web and User Experience Design	104-112	-	English	†	†	✓

* Eligible applicants will be invited to submit a digital portfolio as part of the application process.

† Placement year and/or study abroad options may be available, potentially extending the duration of study up to 4 years. Study abroad will be subject to any international travel restrictions and/or availability see mmu.ac.uk/courses

DIGITAL MEDIA AND COMMUNICATIONS

Degree title	UCAS Points	Specific Subject	GCSE grade C or 4 in	Placement Year	Study Abroad	Foundation Year
BSc (Hons) Digital Media and Communications	104-112	-	English & Maths	✗	✗	✓

ECONOMICS AND INTERNATIONAL BUSINESS

Degree title	UCAS Points	Specific Subject	GCSE grade C or 4 in	Placement Year	Study Abroad	Foundation Year
BA/BSc (Hons) Economics*	112-120	-	English & Maths	†	†	✓
BA (Hons) International Business Management	104-112	-	English & Maths	†	†	✓

* All students will apply directly to the BA (Hons) Economics. After your first year, you can choose to continue on the BA (Hons) Economics which focuses on policy, or you can transfer to BSc (Hons) Economics for your second and third year, which focuses on advanced statistics, economic modelling and forecasting.

† Placement year and/or study abroad options may be available, potentially extending the duration of study up to 4 years. Study abroad will be subject to any international travel restrictions and/or availability see mmu.ac.uk/courses

ENGINEERING AND PRODUCT DESIGN

Degree title	UCAS Points	Specific Subject	GCSE grade C or 4 in	Placement Year	Study Abroad	Foundation Year
BEng (Hons) Biomedical Engineering	104-112	Maths/Engineering	English & Maths	†	✗	✓
MEng (Hons) Electrical and Electronic Engineering	112-120	Maths/Engineering	English & Maths	†	✗	✗
BEng (Hons) Electrical and Electronic Engineering	104-112	Maths/Engineering	English & Maths	†	✗	✓

As well as the option of a year abroad as part of a 4-year or 5-year course, many of our degree programmes also offer options to study abroad for a shorter period of time. Please visit mmu.ac.uk/exchange for further information.

ENGINEERING AND PRODUCT DESIGN (CONTINUED)

Degree title	UCAS Points	Specific Subject	GCSE grade C or 4 in	Placement Year	Study Abroad	Foundation Year
MEng (Hons) Mechanical Engineering	112-120	Maths/Engineering	English & Maths	†	✗	✗
BEng (Hons) Mechanical Engineering	104-112	Maths/Engineering	English & Maths	†	✗	✓
BSc (Hons) Product Design Engineering	104-112	See mmu.ac.uk/courses	English & Maths	†	✗	✓

† Placement year and/or study abroad options may be available, potentially extending the duration of study up to 4 years. Study abroad will be subject to any international travel restrictions and/or availability see mmu.ac.uk/courses

ENGLISH, FILM STUDIES AND CREATIVE WRITING

Degree title	UCAS Points	Specific Subject	GCSE grade C or 4 in	Placement Year	Study Abroad	Foundation Year
BA (Hons) English	104-112	-	English	†	†	✓
BA (Hons) English and American Literature	104-112	-	English	†	†	✓
BA (Hons) English and Creative Writing	104-112	-	English	†	†	✓
BA (Hons) English and Film	104-112	-	English	†	†	✓
BA (Hons) English and Multimedia Journalism	104-112	-	English & Maths	†	†	✓
BA (Hons) English and French	104-112	French	English	◆	◆	✓
BA (Hons) Linguistics and English	104-112	-	English	†	†	✓
BA (Hons) English and Spanish	104-112	Spanish	English	◆	◆	✓
BA (Hons) English (with a modern language) (French, Japanese, Mandarin Chinese, Modern Standard Arabic or Spanish)	104-112	See mmu.ac.uk/courses	English	†	†	✓
BA (Hons) English and Teaching English to Speakers of Other Languages	104-112	-	English	†	†	✓
BA (Hons) Creative Writing	104-112	-	English	†	†	✓
BA (Hons) Film and Media Studies	104-112	-	English	†	†	✓

† Placement year and/or study abroad options may be available, potentially extending the duration of study up to 4 years. Study abroad will be subject to any international travel restrictions and/or availability see mmu.ac.uk/courses

◆ Period of residence abroad/placement will take place in a French or Spanish-speaking country and will be subject to any international travel restrictions and/or availability see mmu.ac.uk/courses

FASHION

Degree title	UCAS Points	Specific Subject	GCSE grade C or 4 in	Placement Year	Study Abroad	Foundation Year
BA (Hons) Fashion*	104-112	-	English	†	†	✗
BA (Hons) Fashion Art Direction*	104-112	-	English	†	†	✗
BSc (Hons) Fashion Business and Management	104-112	-	English & Maths	†	†	✗
BSc (Hons) Fashion Buying and Merchandising	104-112	-	English & Maths	†	†	✗
BA (Hons) Fashion Design and Technology*	104-112	-	English	†	†	✗
BSc (Hons) Fashion Marketing	104-112	-	English & Maths	†	†	✗
BA (Hons) Fashion Communication**	104-112	-	English	†	†	✗

* Eligible applicants will be invited to submit a digital portfolio as part of the application process.

** Eligible applicants may be invited to interview or to submit a digital portfolio as part of the application process.

† Placement year and/or study abroad options may be available, potentially extending the duration of study up to 4 years. Study abroad will be subject to any international travel restrictions and/or availability see mmu.ac.uk/courses

GCSE English requirement is English language or acceptable equivalent.

GEOGRAPHY AND THE ENVIRONMENT

Degree title	UCAS Points	Specific Subject	GCSE grade C or 4 in	Placement Year	Study Abroad	Foundation Year
BSc (Hons) Geography	104-112	Geography	English & Maths	†	†	✓
BSc (Hons) Human Geography	104-112	Geography/Sociology/History/Politics	English & Maths	†	†	✗
BSc (Hons) Physical Geography	104-112	Geography/Geology/Environmental Science/Science	English & Maths	†	†	✗
BSc (Hons) Environmental Science	104-112	Geography/Geology/Environmental Science/Maths/Science	English & Maths	†	†	✓

† Placement year and/or study abroad options may be available, potentially extending the duration of study up to 4 years. Study abroad will be subject to any international travel restrictions and/or availability see mmu.ac.uk/courses

HEALTH, SOCIAL CARE AND SOCIAL WORK

Degree title	UCAS Points	Specific Subject	GCSE grade C or 4 in	Placement Year	Study Abroad	Foundation Year
BA (Hons) Social Work* ‡	120	-	English	✗	✗	✗
BA (Hons) Integrated Health and Social Care ‡	104-112	-	English	✗	✗	✗

* Eligible applicants will be invited to interview as part of the application process.

‡ Satisfactory Enhanced Disclosure and Barring Service (DBS) and/or occupational health clearance is also required to participate in this course. For further information visit mmu.ac.uk/courses

HISTORY

Degree title	UCAS Points	Specific Subject	GCSE grade C or 4 in	Placement Year	Study Abroad	Foundation Year
BA (Hons) History	104-112	-	English	†	†	✓
BA (Hons) Joint Honours History and International Relations	104-112	-	English	†	†	✓
BA (Hons) Joint Honours History and Politics	104-112	-	English	†	†	✓

† Placement year and/or study abroad options may be available, potentially extending the duration of study up to 4 years. Study abroad will be subject to any international travel restrictions and/or availability see mmu.ac.uk/courses

HUMAN RESOURCE MANAGEMENT AND BUSINESS PSYCHOLOGY

Degree title	UCAS Points	Specific Subject	GCSE grade C or 4 in	Placement Year	Study Abroad	Foundation Year
BA (Hons) Business Psychology	104-112	-	English & Maths	†	†	✓
BA (Hons) Business and Human Resource Management	104-112	-	English & Maths	†	†	✓
BA (Hons) Human Resource Management	104-112	-	English & Maths	†	†	✓

† Placement year and/or study abroad options may be available, potentially extending the duration of study up to 4 years. Study abroad will be subject to any international travel restrictions and/or availability see mmu.ac.uk/courses

As well as the option of a year abroad as part of a 4-year or 5-year course, many of our degree programmes also offer options to study abroad for a shorter period of time. Please visit mmu.ac.uk/exchange for further information.

JOURNALISM

Degree title	UCAS Points	Specific Subject	GCSE grade C or 4 in	Placement Year	Study Abroad	Foundation Year
BA (Hons) Multimedia Journalism	104-112	-	English & Maths	†	†	✓
BA (Hons) English and Multimedia Journalism	104-112	-	English & Maths	†	†	✓

† Placement year and/or study abroad options may be available, potentially extending the duration of study up to 4 years. Study abroad will be subject to any international travel restrictions and/or availability see mmu.ac.uk/courses

LANGUAGES, LINGUISTICS AND TEACHING ENGLISH TO SPEAKERS OF OTHER LANGUAGES

Degree title	UCAS Points	Specific Subject	GCSE grade C or 4 in	Placement Year	Study Abroad	Foundation Year
BA (Hons) French and Spanish	104-112	French/Spanish	English	◆	◆	✓
BA (Hons) French and Linguistics	104-112	French	English	◆	◆	✓
BA (Hons) French, Interpreting and Translation	104-112	French	English	◆	◆	✓
BA (Hons) French (with a modern language) (Japanese, Mandarin Chinese, Modern Standard Arabic or Spanish)	104-112	See mmu.ac.uk/courses	English	◆	◆	✓
BA (Hons) Spanish and Linguistics	104-112	Spanish	English	◆	◆	✓
BA (Hons) Spanish, Interpreting and Translation	104-112	Spanish	English	◆	◆	✓
BA (Hons) Spanish (with a modern language) (French, Japanese, Mandarin Chinese or Modern Standard Arabic)	104-112	See mmu.ac.uk/courses	English	◆	◆	✓
BA (Hons) English Language and Linguistics	104-112	-	English	†	†	✓
BA (Hons) English Language and Linguistics (with a modern language) (French, Japanese, Mandarin Chinese, Modern Standard Arabic or Spanish)	104-112	See mmu.ac.uk/courses	English	†	†	✓
BA (Hons) Teaching English to Speakers of Other Languages and French	104-112	French	English	◆	◆	✓
BA (Hons) Teaching English to Speakers of Other Languages and Spanish	104-112	Spanish	English	◆	◆	✓
BA (Hons) Teaching English to Speakers of Other Languages and Linguistics	104-112	-	English	†	†	✓
BA (Hons) Teaching English to Speakers of Other Languages (with a modern language) (French, Japanese, Mandarin Chinese, Modern Standard Arabic or Spanish)	104-112	See mmu.ac.uk/courses	English	†	†	✓
BA (Hons) Business Management and French	104-112	French	English & Maths	◆	◆	✓
BA (Hons) Business Management and Spanish	104-112	Spanish	English & Maths	◆	◆	✓
BA (Hons) Business Management (with a modern language) (French, Japanese, Mandarin Chinese, Modern Standard Arabic or Spanish)	104-112	See mmu.ac.uk/courses	English & Maths	†	†	✓
BA (Hons) English and French	104-112	French	English	◆	◆	✓
BA (Hons) English and Spanish	104-112	Spanish	English	◆	◆	✓

GCSE English requirement is English language or acceptable equivalent.

LANGUAGES, LINGUISTICS AND TEACHING ENGLISH TO SPEAKERS OF OTHER LANGUAGES (CONTINUED)

Degree title	UCAS Points	Specific Subject	GCSE grade C or 4 in	Placement Year	Study Abroad	Foundation Year
BA (Hons) English (with a modern language)(French, Japanese, Mandarin Chinese, Modern Standard Arabic or Spanish)	104-112	See mmu.ac.uk/courses	English	†	†	✓
BA (Hons) English and Teaching English to Speakers of Other Languages	104-112	-	English	†	†	✓
BA (Hons) Linguistics and English	104-112	-	English	†	†	✓
BA (Hons) International Relations and French	104-112	French	English	◆	◆	✓
BA (Hons) International Relations and Spanish	104-112	Spanish	English	◆	◆	✓
BA (Hons) International Relations (with a modern language) (French, Japanese, Mandarin Chinese, Modern Standard Arabic or Spanish)	104-112	See mmu.ac.uk/courses	English	†	†	✓
BA (Hons) Linguistics and International Relations	104-112	-	English	†	†	✓

† Placement year and/or study abroad options may be available, potentially extending the duration of study up to 4 years. Study abroad will be subject to any international travel restrictions and/or availability see mmu.ac.uk/courses

◆ Period of residence abroad/placement will take place in a French or Spanish-speaking country and will be subject to any international travel restrictions and/or availability see mmu.ac.uk/courses

LAW

Degree title	UCAS Points	Specific Subject	GCSE grade C or 4 in	Placement Year	Study Abroad	Foundation Year
LLB (Hons) Law	120	See mmu.ac.uk/courses	English** & Maths	†	†	✓
LLB (Hons) Law part-time*	120	See mmu.ac.uk/courses	English** & Maths	✗	✗	✗

* This course is currently suspended for entry in 2022 and will be reviewed for 2023 entry. For the latest information, visit mmu.ac.uk/courses

** GCSE grade C or 5 in English language.

† Placement year and/or study abroad options may be available, potentially extending the duration of study up to 4 years. Study abroad will be subject to any international travel restrictions and/or availability see mmu.ac.uk/courses

MARKETING, BRAND AND ADVERTISING

Degree title	UCAS Points	Specific Subject	GCSE grade C or 4 in	Placement Year	Study Abroad	Foundation Year
BA (Hons) Advertising and Brand Communications	104-112	-	English & Maths	†	†	✗
BA (Hons) Business and Marketing	112	-	English & Maths	†	†	✗
BA (Hons) Marketing	104-112	-	English & Maths	†	†	✓

† Placement year and/or study abroad options may be available, potentially extending the duration of study up to 4 years. Study abroad will be subject to any international travel restrictions and/or availability see mmu.ac.uk/courses

As well as the option of a year abroad as part of a 4-year or 5-year course, many of our degree programmes also offer options to study abroad for a shorter period of time. Please visit mmu.ac.uk/exchange for further information.

MATHEMATICS

Degree title	UCAS Points	Specific Subject	GCSE grade C or 4 in	Placement Year	Study Abroad	Foundation Year
BSc (Hons) Mathematics	104-112	Maths/Further Maths/ Maths & Statistics/ Pure Maths	English & Maths	†	✗	✓

† Placement year and/or study abroad options may be available, potentially extending the duration of study up to 4 years. Study abroad will be subject to any international travel restrictions and/or availability see mmu.ac.uk/courses

NURSING

Degree title	UCAS Points	Specific Subject	GCSE grade C or 4 in	Placement Year	Study Abroad	Foundation Year
BSc (Hons) Adult Nursing* ‡	Min. 104	-	English, Maths & Science + 2 GCSEs	✗	✗	✗
BSc (Hons) Mental Health Nursing* ‡	Min. 112	-	English, Maths & Science + 2 GCSEs	✗	✗	✗
FdSc Health and Care Practice (Nursing Associate)* ‡	See mmu.ac.uk/courses	-	English & Maths	✗	✗	✗

* Eligible applicants will be invited to interview as part of the application process.
 ‡ Satisfactory Enhanced Disclosure and Barring Service (DBS) and/or occupational health clearance is also required to participate in this course. For further information visit mmu.ac.uk/courses

NUTRITION

Degree title	UCAS Points	Specific Subject	GCSE grade C or 4 in	Placement Year	Study Abroad	Foundation Year
BSc (Hons) Nutritional Sciences	112	Science/Physical Education/Psychology	English & Maths	†	✗	✗
BSc (Hons) Sport and Exercise Nutrition	112	Science/Physical Education/Psychology	English & Maths	†	✗	✗

† Placement year and/or study abroad options may be available, potentially extending the duration of study up to 4 years. Study abroad will be subject to any international travel restrictions and/or availability see mmu.ac.uk/courses

PHILOSOPHY

Degree title	UCAS Points	Specific Subject	GCSE grade C or 4 in	Placement Year	Study Abroad	Foundation Year
BA (Hons) Philosophy	104-112	-	English	†	†	✓
BA (Hons) Ethics, Religion and Philosophy	104-112	-	English	†	†	✓
BA (Hons) Joint Honours Politics and Philosophy	104-112	-	English	†	†	✓

† Placement year and/or study abroad options may be available, potentially extending the duration of study up to 4 years. Study abroad will be subject to any international travel restrictions and/or availability see mmu.ac.uk/courses

GCSE English requirement is English language or acceptable equivalent.

PHYSIOTHERAPY AND SPEECH AND LANGUAGE THERAPY

Degree title	A-level/ BTEC grades	Specific Subject	GCSE grade C or 4 in	Placement Year	Study Abroad	Foundation Year
BSc (Hons) Physiotherapy* ‡	ABB/DDD	Biological Science subject	English, Maths & Science + 2 GCSEs	✗	✗	✗
BSc (Hons) Speech and Language Therapy* ‡	ABB/DDD	See mmu.ac.uk/courses	English, Maths & Science + 2 GCSEs	✗	✗	✗

* Eligible applicants will be invited to interview as part of the application process.

‡ Satisfactory Enhanced Disclosure and Barring Service (DBS) and/or occupational health clearance is also required to participate in this course. For further information visit mmu.ac.uk/courses

POLITICS AND INTERNATIONAL RELATIONS

Degree title	UCAS Points	Specific Subject	GCSE grade C or 4 in	Placement Year	Study Abroad	Foundation Year
BA (Hons) Politics	104-112	-	English	†	†	✓
BA (Hons) International Relations	104-112	-	English	†	†	✓
BA (Hons) Joint Honours History and Politics	104-112	-	English	†	†	✓
BA (Hons) Joint Honours Politics and Philosophy	104-112	-	English	†	†	✓
BA (Hons) Joint Honours History and International Relations	104-112	-	English	†	†	✓
BA (Hons) International Relations (with a modern language)(French, Japanese, Mandarin Chinese, Modern Standard Arabic or Spanish)	104-112	See mmu.ac.uk/courses	English	†	†	✓
BA (Hons) International Relations and French	104-112	French	English	◆	◆	✓
BA (Hons) International Relations and Spanish	104-112	Spanish	English	◆	◆	✓
BA (Hons) Linguistics and International Relations	104-112	-	English	†	†	✓

† Placement year and/or study abroad options may be available, potentially extending the duration of study up to 4 years. Study abroad will be subject to any international travel restrictions and/or availability see mmu.ac.uk/courses

◆ Period of residence abroad/placement will take place in a French or Spanish-speaking country and will be subject to any international travel restrictions and/or availability see mmu.ac.uk/courses

PSYCHOLOGY

Degree title	UCAS Points	Specific Subject	GCSE grade C or 4 in	Placement Year	Study Abroad	Foundation Year
BSc (Hons) Psychology ‡	120	-	English & Maths	†	†	✓
BSc (Hons) Forensic Psychology ‡	128	-	English & Maths	✗	✗	✗
BSc (Hons) Psychology with Counselling and Psychotherapy ‡	128	-	English & Maths	✗	✗	✗
BSc (Hons) Educational Psychology ‡	112	-	English & Maths	✗	✗	✗

† Placement year and/or study abroad options may be available, potentially extending the duration of study up to 4 years. Study abroad will be subject to any international travel restrictions and/or availability see mmu.ac.uk/courses

‡ Satisfactory Enhanced Disclosure and Barring Service (DBS) and/or occupational health clearance is also required to participate in this course. For further information visit mmu.ac.uk/courses

As well as the option of a year abroad as part of a 4-year or 5-year course, many of our degree programmes also offer options to study abroad for a shorter period of time. Please visit mmu.ac.uk/exchange for further information.

SOCIOLOGY AND CRIMINOLOGY

Degree title	UCAS Points	Specific Subject	GCSE grade C or 4 in	Placement Year	Study Abroad	Foundation Year
BA (Hons) Sociology	104-112	-	English & Maths	†	†	✓
BSc (Hons) Sociology with Quantitative Methods	104-112	-	English & Maths	†	†	✗
BA (Hons) Criminology	104-112	-	English & Maths	†	†	✓
BSc (Hons) Criminology with Quantitative Methods	104-112	-	English & Maths	†	†	✗
BA (Hons) Criminology and Sociology	104-112	-	English & Maths	†	†	✓
BSc (Hons) Criminology and Sociology with Quantitative Methods	104-112	-	English & Maths	†	†	✗

† Placement year and/or study abroad options may be available, potentially extending the duration of study up to 4 years. Study abroad will be subject to any international travel restrictions and/or availability see mmu.ac.uk/courses

SPORT AND EXERCISE SCIENCES

Degree title	UCAS Points	Specific Subject	GCSE grade C or 4 in	Placement Year	Study Abroad	Foundation Year
BSc (Hons) Health and Exercise Science	104-112	Science/Physical Education/Psychology	English & Maths	†	✗	✓
BSc (Hons) Sport and Exercise Nutrition	112	Science/Physical Education/Psychology	English & Maths	†	✗	✗
BSc (Hons) Sport and Exercise Science (also available as distance learning)	104-112	Science/Physical Education/Psychology/Sport	English & Maths	†	✗	✓
BSc (Hons) Sport Coaching and Development ‡ (also available as distance learning)	104-112	-	English & Maths	†	✗	✓
FdSc Manchester City Community Football Coaching ‡	96-104	-	English & Maths	✗	✗	✗
BSc (Hons) Manchester City Community Football Coaching ‡	104-112	-	English & Maths	†	✗	✗

† Placement year and/or study abroad options may be available, potentially extending the duration of study up to 4 years. Study abroad will be subject to any international travel restrictions and/or availability see mmu.ac.uk/courses

‡ Satisfactory Enhanced Disclosure and Barring Service (DBS) and/or occupational health clearance is also required to participate in this course. For further information visit mmu.ac.uk/courses

SPORTS BUSINESS MANAGEMENT AND SPORTS MARKETING MANAGEMENT

Degree title	UCAS Points	Specific Subject	GCSE grade C or 4 in	Placement Year	Study Abroad	Foundation Year
BSc (Hons) Sports Business Management	104-112	-	English & Maths	†	†	✓
BSc (Hons) Sports Marketing Management	104-112	-	English & Maths	†	†	✓

† Placement year and/or study abroad options may be available, potentially extending the duration of study up to 4 years. Study abroad will be subject to any international travel restrictions and/or availability see mmu.ac.uk/courses

TEACHING

Degree title	UCAS Points	Specific Subject	GCSE grade C or 4 in	Placement Year	Study Abroad	Foundation Year
BA (Hons) Primary Education with QTS* ‡	120	-	English, Maths & Science + 2 GCSEs	✗	✗	✗

* Eligible applicants will be invited to interview as part of the application process.

‡ Satisfactory Enhanced Disclosure and Barring Service (DBS) and/or occupational health clearance is also required to participate in this course. For further information visit mmu.ac.uk/courses

TOURISM, EVENTS AND HOSPITALITY MANAGEMENT

Degree title	UCAS Points	Specific Subject	GCSE grade C or 4 in	Placement Year	Study Abroad	Foundation Year
BSc (Hons) International Hospitality Business Management	104-112	-	English & Maths	†	†	✓
BA (Hons) International Tourism Management	104-112	-	English & Maths	†	†	✓
BA (Hons) Events Management	104-112	-	English & Maths	†	†	✓

† Placement year and/or study abroad options may be available, potentially extending the duration of study up to 4 years. Study abroad will be subject to any international travel restrictions and/or availability see mmu.ac.uk/courses

DEGREE APPRENTICESHIPS

Degree title	UCAS Points	Specific Subject	GCSE grade C or 4 in	Placement Year	Study Abroad	Foundation Year
Chartered Manager Degree Apprenticeship with a BA (Hons) Business Management Professional*	104	-	English, Maths & preferably ICT	✗	✗	✗
Creative Digital Design Professional Degree Apprenticeship with a BA (Hons) Creative Digital Design*†	104	-	English & Maths	✗	✗	✗
Digital and Technology Solutions Degree Apprenticeship with a BSc (Hons) Digital and Technology Solutions*	104	-	English & Maths	✗	✗	✗
Digital Marketer Degree Apprenticeship with a BSc (Hons) Digital Marketing*	104	-	English & Maths	✗	✗	✗
Digital User Experience (UX) Professional Degree Apprenticeship with a BSc (Hons) Digital User Experience (UX)*	104	-	English & Maths	✗	✗	✗
Healthcare Science Practitioner Degree Apprenticeship with a BSc (Hons) Healthcare Science*	120	Biology/Human Biology	English & Maths	✗	✗	✗
Laboratory Scientist Degree Apprenticeship with a BSc (Hons) Chemical Science*	104	Chemistry	English & Maths	✗	✗	✗

* In order to successfully secure an apprenticeship, you will need to apply for a full-time position with one of our partner employers.

† This course is subject to approval. For the latest information, visit mmu.ac.uk/apprenticeships

GCSE English requirement is English language or acceptable equivalent.

As well as the option of a year abroad as part of a 4-year or 5-year course, many of our degree programmes also offer options to study abroad for a shorter period of time. Please visit mmu.ac.uk/exchange for further information.

We are committed to ensuring that all of our materials are accessible. This brochure is available in a range of formats, such as large print, on request via marketing@mmu.ac.uk

FIND OUT WHAT YOU REALLY NEED TO KNOW

Open Days

Wednesday 22 June 2022

Saturday 8 October 2022

Saturday 15 October 2022

Saturday 26 November 2022

Book your place at
mmu.ac.uk/openday

Any questions? We're here to help.

mmu.ac.uk/course-enquiry

0161 247 6969

