

RAH! Research in Arts
and Humanities at
Manchester Met



Research
to Shout
about!



RAH!
Events
Programme

Feb – Mar 2018

www.mmu.ac.uk/rah



Contents

Beyond the Battlefields: Käthe Buchler's Photographs of Germany in the Great War	4-5	Faculty of Arts and Humanities at Manchester Met Inaugural Lectures	16
Ada Nield Chew, Radical Suffragist: pop-up protest	6	Jean Sprackland Inaugural Lecture GREEN NOISE AND GRAVESTONES: a reading of poetry and prose	16
Beyond Babel Film Festival • <i>Né quelque part</i> • <i>El futuro perfecto</i> • <i>English Vinglish</i>	7-9	Sylvia's Sisters: Celebrating International Women's Day	18
Life on the Outskirts Symposium: inspiration and interventions in small creative archives	10	Stephen Morris Inaugural Lecture	19
The Erotic Cloth: seminar and book launch	12	Getting Out for Good Launch	20
A Shropshire Lad in Ancient Rome: A. E. Housman and ancient 'homosexuality'	13	The Women's Peace Crusade 1917-1918: Crusading Women in Manchester and East Lancashire	20
Arts&Heritage: contemporary arts practice in heritage sites	14	Feminism and Museums	22

2017/18 theme: Finding Voices

Running under the banner 'Finding Voices', the inaugural 2017/18 RAH! Programme is designed to highlight our creative practice and critical analysis as it intersects with, and intervenes in, cultural movements and social justice issues as well as governmental planning and policy-making. Our research seeks to make a real difference to people's lives.

Working with our partners and diverse communities in Greater Manchester and beyond, 'Finding Voices' will include public lectures and seminars, film screenings, fairs and shows, discussion, show 'n tell workshops, artist happenings and augmented reality.

Introduction

RAH! is the new public engagement programme of the Faculty of Arts and Humanities at Manchester Met. It builds on the enormous success of our 'Humanities in Public' (HiP) Festival, which has run since 2013/14.

RAH! will present a rolling programme of events, throughout the academic year.

2017/18 Strands:

Gender and Sexualities
Representations of Conflict
Migration and Diaspora
Creative Geographies
Archive Interventions
Inaugural lectures

You can find tickets at our website www.mmu.ac.uk/rah

Additional events will be added after the publication of this brochure so please check the website for more details!

The RAH! Team are:

RAH!
Director



Professor
Berthold Schoene

RAH!
Co-ordinator



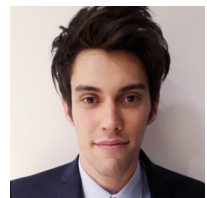
Dr Jenna Ashton

RAH!
Co-ordinator



Helen Darby

RAH!
Media Assistant



Andrew Turbine

RAH! Events Programme February – March 2018

Thursday 1st February

Beyond the
Battlefields:
Käthe Buchler's
Photographs of
Germany in the
Great War

Private View and launch

6.00pm – 8.00pm

Grosvenor Gallery

Manchester Metropolitan
University
Grosvenor Building
Cavendish St
Manchester
M15 6BR

Free – See RAH! website for
tickets

Join us for the exhibition launch of a unique series of images made by photographer Käthe Buchler (1876-1930) in Germany before, during and after World War One, which are part of the collection of the Museum of Photography in Braunschweig – where Buchler lived and worked.

Buchler's exquisitely posed portraits and landscapes are the vision of a respectable, bourgeois wife and mother, a pillar of her community with significant technical expertise and a remarkable (and little known) aesthetic vision; she was an early adopter of the 'Autochrome' process, the world's first colour photographic process.

Buchler's photos during the Great War examine the care of orphaned children and wounded troops. Images of children as an integral part of the war effort provide a remarkable insight into the war's impact on their everyday lives. Together with a fascinating series entitled 'Women in Men's Jobs', they provide a remarkable window on the preoccupations of ordinary Germans, living and working hundreds of miles away from the fighting.

Exhibition runs 2 February – 1 March 2018
Beyond the Battlefields: an international touring exhibition co-organised by the History Research and Manchester School of Art at Manchester Metropolitan University, Museum Für Photographie, Braunschweig and the AHRC funded First World War engagement centres at the University of Birmingham and the University of Hertfordshire.



VOICES
OF WAR AND PEACE

MUSEUM FÜR PHOTOGRAPHIE
BRAUNSCHWEIG



Arts & Humanities
Research Council



UNIVERSITY OF
BIRMINGHAM

Images © Estate of Kathè Buchler
– Museum für Photographie
Braunschweig/Deposit
Stadtarchive Braunschweig



Tuesday 6 February

Ada Nield Chew,
Radical Suffragist:
pop-up protest

10.30am

Geoffrey Manton Building

Manchester Metropolitan University
Rosamond Street West
Manchester
M15 6LL

Free – See RAH! website for tickets

6 February 2018 is the centenary of the legal assent of the Representation of the People Act, which gave some women the vote for the first time, thanks to activists like Ada Nield Chew.

Ada Nield Chew was a radical suffragist, women's trades unionist and an author. Her long career in activism began in 1894 with a series of protest letters to the Crewe Chronicle complaining about the unfair conditions in the factory, where she was employed as a tailor.

This "pop-up protest" is an original adaptation of Ada Nield Chew's 'Crewe Factory Girl' Letters, written and directed by Shelley Piasecka (University of Chester) in collaboration with Kirsty Bunting and Orlagh McCabe (Senior Lecturers at Manchester Met and Directors of the Local Youth Engagement Project).

Kirsty Bunting (English Subject Leader, Manchester Met Cheshire) and Orlagh McCabe are Senior Lecturers at Manchester Metropolitan University and run the Local Youth Engagement Project, inspired by Nield Chew. They are delighted to collaborate with Shelley



Ada Nield Chew,
Local Youth Engagement Project

Piasecka, Senior Lecturer at the University of Chester (Performing Arts Department) and theatre director and writer. Shelley is co-founder of Piasecki & Piasecka Theatre Company. Jessie Harris is an actor based in West Yorkshire and has a number theatre and production credits. Jessie is delighted to be performing as Ada Nield Chew for this event.

www.localyouthengagement.org



University of
Chester



MANCHESTER METROPOLITAN UNIVERSITY

6 – 8 February

Beyond Babel Film Festival

Returning for a fourth time, our very popular multilingual film festival for 2018 explores the themes of migration and diaspora in multilingual societies.



Tuesday 6 February

Né quelque part (Mohamed Hamidi, 2013, 85 minutes)

**O&A led by Isabelle Vanderschelden
(Manchester Metropolitan University)**

6.00pm

70 Oxford Street
Manchester
M1 5NH

Free – See RAH! website for tickets

Also known as *Homeland*, this is the story of Farid, a law student in France who is forced to travel for the first time to Algeria, his father's homeland. This will be a voyage of discovery, of family reunions and reflection on personal sacrifice. This is a movie with a fine balance between humour and gravity.

"A reverse immigrant comedy – drama that's enjoyable if tonally somewhat heterogeneous"

© The Hollywood Reporter

Wednesday 7 February

El futuro perfecto (Nele Wohlatz, 2016, 65 minutes)

**Q&A led by Carmen Herrero
(Manchester Metropolitan University)**

6.00pm

Instituto Cervantes (Main Hall)
326-330 Deansgate
Campfield Avenue Arcade
Manchester M3 4FN

Free – See RAH! website for tickets

The young Xiaobin reunites in Argentina with her family after some time apart. Wanting to learn Spanish, she works in a grocery store to pay for lessons, which she keeps a secret. As her language skills evolve, she starts dating Vijat, an Indian customer. When she learns the form of possibility, which is the “perfect future tense” or “conditional”, she starts to ponder what would happen if *she were* to tell her parents about Vijai.



“This quiet, modestly-scaled character study [...] depicts the immigration experience through the process of mastering a language, and gaining the confidence that comes with it”

© The New York Times

Thursday 8 February

English Vinglish (Gauri Shinde, 2012, 134 minutes)

**Q&A led by Sheraz Ali
(University of Manchester)**

6.00pm

Geoffrey Manton Lecture Theatre 1

Manchester Metropolitan University
Rosamond Street West
Oxford Road M15 6LL

Free – See RAH! website for tickets

This is the story of Shashi, a stay-at-home mother who feels ashamed about her inability to speak English and the mockery that her family make of her as a consequence.

When circumstances take her to New York and unbeknown to her family, she starts to attend English classes.

Shashi will meet there a wide variety of characters, who will embrace her charm and cooking skills as her confidence grows and learns the language. A heart warming film for all the family.





"Hilarious, touching, sensitive, this film marks the come back of India's biggest female star... Sridevi."

© Rotten Tomatoes

Beyond Babel is brought to you by FLAME (Film, Languages and Media in Education) at Manchester Metropolitan University



 @FLAMEresearch
 facebook.com/flame.mmu.35



Friday 9 February

Life on the Outskirts Symposium: inspiration and interventions in small creative archives

11.00am – 5.00pm
(Registration from 10.30am)

BZ403, Benzie Building
Manchester School of Art

Manchester Metropolitan University
 Boundry Street West
 Manchester
 M15 6BR

Free – To register please email
lotohsf@gmail.com

In association with the Arts & Humanities
 Research Council, Helen Storey Foundation
 and University of Leeds.

Life on the Outskirts is an AHRC-funded project between the University of Leeds, Manchester Metropolitan University and the Helen Storey Foundation. It seeks to find fresh creativity by revisiting past practice and uses the Helen Storey Foundation archive as both case study and inspiration, highlighting a pathway through the creative opportunities that archives can offer.

This symposium brings together academics who are interesting in, inspired by and/or working with small creative archives to explore the multiple challenges and opportunities faced by small creative archive collections and those working with them. Our keynote speaker will be Sue Breakell, Archivist and Senior Research Fellow at the University of Brighton Design Archives, whose research engages the nature, meaning and practice of archives and their creative uses in art and design contexts.

Presentations will explore how archives of small creative organisations, and small creative collections within archive settings, can offer multiple potential applications and the challenges, including: artistic interventions in creative archives; using creatives archives for teaching purposes; developing digital access in creative archives; engaging members of the public with creative archives; and the potential commercial mobilisation of creative archives.

For more information on the
 'Life on the Outskirts' project,
 see: **www.lifeontheoutskirts.org**



Arts & Humanities
 Research Council



MANCHESTER
 SCHOOL OF ART



Helen Storey's Kensington and Chelsea Bin Bag Ball Skirt, from Present Times Collection Autumn/Winter 1993 (Photograph courtesy of Platon, 1994, to mark 10 years in fashion).

**Wednesday
14 February**

The Erotic
Cloth: seminar
and book
launch

2.00pm-5.00pm



Manchester Met Special Collections

3rd Floor, All Saints Library
Manchester Metropolitan University
All Saints Park
Manchester
M15 6BH

Free – See RAH! website for tickets

The Erotic Cloth seminar is programmed to coincide with the publication of the eponymous book, which explores ways in which the qualities of cloth can seduce, conceal and reveal the sensuality of the human condition. The presentations will explore the aesthetics of cloth to excite and disturb through its gendered materiality alongside the metaphorical and actual qualities of cloth as seductive, erotic, intimate and at times shocking. The seminar will discuss historical representation of cloth, artistic practice and offer an opportunity to view Vivienne Westwood clothes from the Malcolm Garrett Collection in Manchester Metropolitan University Special Collections. The Erotic Cloth published Bloomsbury Feb 2017, is co-edited by Alice Kettle, Professor of Textile Arts, Manchester School of Art (MSA), and Lesley Millar, Professor of Textile Culture and Director of the International Textile Research Centre, UCA Farnham.



**MANCHESTER
SCHOOL OF ART**

1.30pm Registration

'Windmills of your Mind' film screening,

By Louise Adkins Senior Lecturer, MSA, Manchester Met

2pm Welcome and introduction

Alice Kettle, Professor of Textile Arts, MSA, Manchester Met

Lesley Millar, Professor of Textile Culture and Director of the International Textile Research Centre, UCA Farnham.

**2.20pm Stitching Up:
Embroidering the sex life of a
fetishist image-maker**

Dr Nigel Hurlstone, Senior Lecturer, MSA, Manchester Met.

2.40pm Intimate Practices

Dr Jenny Van Hooff, Senior Lecturer, Humanities, Manchester Met.

**3pm A Perverted Taste: Italian
depictions of Cloth and Puberty
in mid-19th century marble**

Dr Claire Jones, Lecturer University of Birmingham.

**3.20pm Folds, Scissors and
Cleavage in Giovanni Battista
Moroni's Il Tagliapanni**

Angela Maddock, Research Fellow of Swansea College of Art and Tutor at RCA.

3.40 – 4pm discussion

4pm Break

**4.20pm Handling session with the
Malcolm Garrett Collection.**

Stephanie Boydell, Curator of the Special Collections Gallery and Malcolm Garrett, Ambassador MSA and Artistic Director of Design Manchester.

5pm Finish



Wednesday 21 February

A Shropshire Lad in Ancient Rome: A. E. Housman and ancient 'homosexuality'

Public Lecture by Professor Jennifer Ingleheart (University of Durham)

Geoffrey Manton Lecture Theatre 3

Manchester Metropolitan University
Oxford Road
Manchester
M15 6LL

Free – See RAH! website for tickets

Studies of A. E. Housman assume a strong divide between his life as a poet – whose verses suggest his homoerotic desire – and as a well-respected Professor of Latin. Professor Ingleheart explodes this myth by exploring in detail Housman's longest and most frank writing on homosexuality: his *Praefanda*, an article aimed at scholars, written in Latin and translated by Prof Ingleheart herself. *Praefanda* is a study of ancient sexuality, but Housman's playful and witty Latin also suggests his intimate

knowledge of the pleasures of homosexual sex and identity. Even more importantly, *Praefanda* makes clear Housman's anger at society's treatment of those holding homosexual desires. As such, she believes, it deserves to be more widely known.

Professor Jennifer Ingleheart is a world-leading scholar of ancient sexualities, based in the Department of Classics and Ancient History at the University of Durham. Her main research interests are in the study, reception and translation of Latin poetry in its political and social contexts, and in the history of how later cultures have responded to 'Roman homosexuality'. This lecture on A.E. Housman is part of a wider project which looks at the importance of Roman sexualities to modern LGBT and queer identities.

Part of the History Research Seminar Series at Manchester Met

Co-hosted with the Manchester Classical Association





*Gestured by Brass Art
at Chetham's Library
© Jonathan Turner*

Friday 23 February**Arts&Heritage: contemporary arts practice in heritage sites****10.00am-2.30pm**

Lecture Theatre 6
Geoffrey Manton Building
Manchester Metropolitan University
Rosamond Street West
Manchester M15 6LL

Free – See RAH! website for tickets

Arts&Heritage is an agency based in Northumberland that occupies the intersection between contemporary art practice and the heritage and museum sector. In 2015 they were successful in securing funds to work closely with small museums in the North East and Yorkshire, supporting them as they commission new art. Called Meeting Point, this programme continued in 2017 and ten artists, designers and performers produced a range of contemporary responses ranging from textile signatures in the landscape, choreography translated into a virtual reality experience and a new beer

produced as a limited edition. Five of the commissioned artists are practitioners and researchers based at Manchester School of Art, Manchester Met.

Arts&Heritage will talk through the Meeting Point programme, outlining the stages to commissioning artists, and what artists need to consider when working within the constraints of a museum. The ten commissioned artists will present their projects accompanied by a short film.

This is a unique opportunity for attendees to learn about this growing area of curatorial and commissioning practice, and hear from the participating artists.

Artists presenting include: Serena Partridge, Stephen Dixon and Alison Welsh, David Appleyard, Brass Art, Martin Hylton, Owl Project, Lynn Settrington, Jacob Cartwright & Nick Jordan, Magnus Quaife, and Matt Stokes.

Arts&Heritage



Supported using public funding by
ARTS COUNCIL ENGLAND

10.00am Registration**10.30-12.45pm**

Introduction by Arts&Heritage

Artist Project Presentations

11.30-11.45 break**11.45-12.45pm****12.45-1.45pm Lunch****1.45-2.20pm**

Q&A and discussion in response to Artist Project Presentations

2.30pm Finish

www.artsandheritage.org.uk

**5 and 12 March**

Faculty of Arts and
Humanities at Manchester
Met Inaugural Lectures

We are extremely proud to celebrate the achievements of our new professors, whether they have been internally promoted or appointed externally. The inaugural lectures provide an opportunity for our most prolific and successful researchers to update us on their current projects and future research plans, and to share their research insights with the wider public. All lectures are free and open to all.

Monday 5 March

Jean Sprackland
Inaugural Lecture

**GREEN NOISE AND
GRAVESTONES:** a reading
of poetry and prose

**Wine reception 5.30pm,
talk at 6.00pm**

Geoffrey Manton Lecture Theatre 2

Manchester Metropolitan University
Oxford Road
Manchester M15 6LL

Free – See RAH! website for tickets

Professor Jean Sprackland will read new work from two forthcoming books: *Green Noise*, a collection of poems, and *These Silent Mansions*, a collection of essays about graveyards.

The poems in *Green Noise* listen for what is audible and available to be known and understood, and what is not. Some inquire into the natural world and our human place in it, by investigating hidden worlds within worlds: oak-apples, aphid farms, firewood teeming with small life. Others go in search of fragments of the past: abandoned villages, scraps of shared history which are only ever partially remembered.

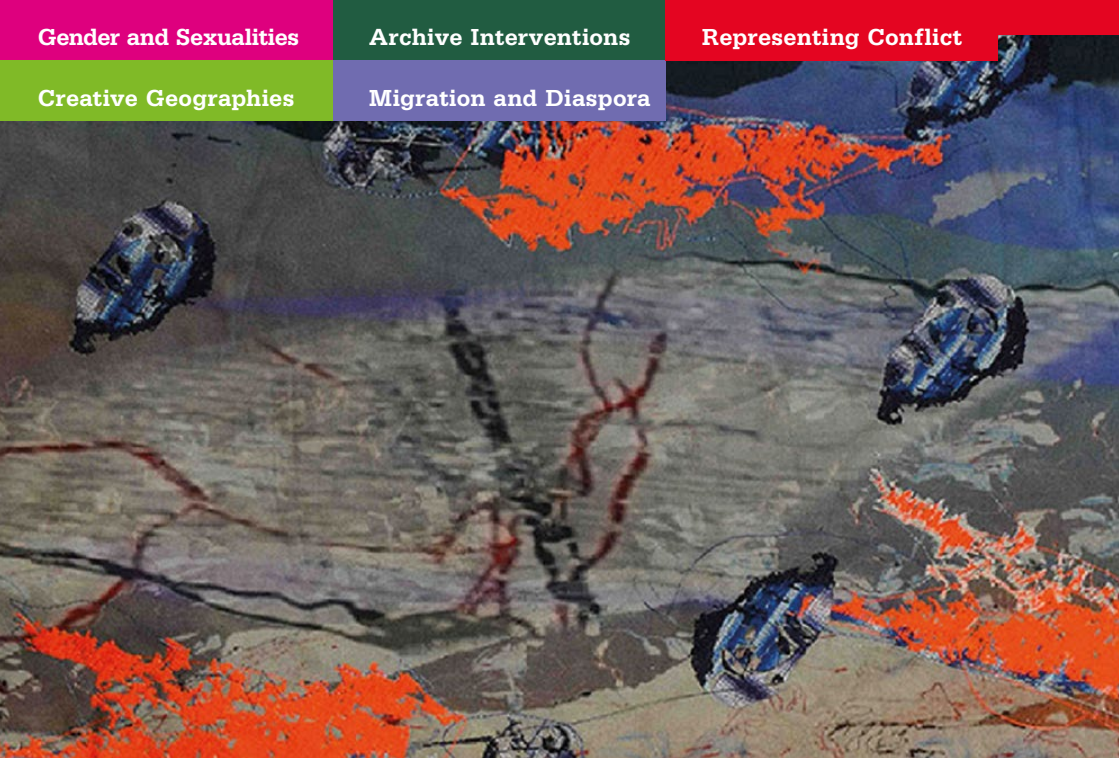
These Silent Mansions arises from a lifetime of exploring churchyards and cemeteries: green spaces, rich in history and biodiversity. It attempts to reconstruct the stories of forgotten individuals, exploring what they mean to the places where those people lived and died, and to their relationship with the living. Memorials stand against the fear of oblivion, but broken and abandoned graves speak of the practical impossibility of being remembered forever.

Jean will talk about some of the themes and preoccupations – place, memory, the nature of time and loss – which are at the heart of both books, and about the work of other writers which has inspired and influenced them.

This lecture will be introduced by Professor Helen Laville (Pro Vice Chancellor for Education at Manchester Metropolitan University) and will be followed with a response from James Sheard (poet and Senior Lecturer in Creative Writing, Keele).

Jean Sprackland has published five poetry collections, including *Tilt*, winner of the Costa Poetry Award in 2007. Her most recent collection, *Sleeping Keys*, is ‘a book distinguished by rueful but unembittered wisdom’ (Sean O’Brien for the Guardian). She is also the author of *Strands*, a book of essays which won the Portico Prize for Non Fiction in 2012. Jean has written and broadcast extensively for BBC Radio, and is Chair of the Poetry Archive.





“Thread Bearing Witness – Sea” (detail), Alice Kettle 2017

Thursday 8 March

Sylvia’s Sisters: Celebrating International Women’s Day

All day

Manchester Met University campus buildings – See RAH! website for tickets

Social activist and artist Sylvia Pankhurst (1882–1960) studied at Manchester Art School, Manchester Met University, from 1898 to 1903.

For International Women’s Day we highlight current arts and social practice of women at Manchester Met University working across art, fashion, architecture and writing.

In association with International Women’s Day 2018.



Monday 12 March

Stephen Morris Inaugural Lecture

**Wine reception 5.30pm,
talk at 6.00pm**

Geoffrey Manton Lecture Theatre 2

Manchester Metropolitan University
Oxford Road
Manchester
M15 6LL

Free – See RAH! website for tickets

In this public lecture, Professor Morris will reflect back over 25 years' experience working as a civil servant, independent researcher and in academia. He will look at how research methods and understandings of causation in policy and programme evaluation have changed over this period, and discuss some of the debates and points of contention that have emerged. The talk will focus particularly on the role of experimental methods, the history of their use in social policy evaluation and some of the controversies and debates that have arisen. It will recount particular examples from Stephen's own work and discuss how these debates shaped the practice of applied research and evaluation. Finally, it will reflect on the connections between research methodology, policymaking and politics, and show how these concerns might relate to current popular debates around the role of experts and expertise within public policy making.

Stephen Morris is Professor of Evaluation based in the Policy Evaluation Research Unit within the Department of Sociology at Manchester Metropolitan University. Stephen's career spans 25 years working in applied social science research with a particular emphasis on the evaluation of interventions and programmes funded



through the public purse with social / economic objectives. During this time, Stephen worked for 13 years as a social scientist within the UK Government and has held senior research posts at the Institute for Employment Studies, Policy Studies Institute and the National Centre for Social Research (now NatCen Social Research). Stephen is a social science methodologist whose work has focused on the use of experimental methods in evaluation and issues of causation in the social sciences more widely.

This lecture will be introduced by Professor Malcolm Press (Vice Chancellor of Manchester Metropolitan University) and will be followed with a response from David H Greenberg (Professor Emeritus in Economics at The University of Maryland, Baltimore county, USA).

Wednesday 14 March

Getting Out for Good Launch

6.00pm – 8.00pm

HOME Mcr

2 Tony Wilson Place
Manchester
M15 4FN

Free – See RAH! website for tickets

The *Getting Out for Good* project is working with at-risk young women and girls across Greater Manchester to understand the challenges they face in their local communities and to help them build positive social networks. Researchers from the Manchester Centre for Youth Studies at Manchester Metropolitan University are working in partnership with local voluntary groups and statutory agencies for *Getting out for Good*, which is funded by the Comic Relief international programme from the Tampon Tax fund.

This youth focused project aims to boost the aspirations of young women and girls through sport and arts, with support from their peers. Activities include boxing and fitness, football, drama and film-making with each activity leading to nationally recognised AQA accreditation. Thanks to this, young women and girls facing complex life issues will have the opportunity to make their voices heard while being helped to create new opportunities for self-empowerment.

Join us for this official launch of the project, updates on progress so far, entertainment, music and special guests!



Wednesday 21 March

The Women's Peace Crusade
1917-1918: Crusading Women
in Manchester and East
Lancashire

5.30pm-8.00pm

**Main Lecture Theatre
(near the Student Union)**

Cheshire Campus, Manchester
Metropolitan University
Crewe Green Road
Cheshire CW1 5DU

Free – See RAH! website for tickets

Dr Alison Ronan is feminist historian with an interest in recovering hidden histories and creating alternative, women-focused narratives, particularly with reference to WW1. Her background is in youth and community work, conflict resolution and using the arts to create spaces for debate and discussion. Recently she has been working on stories and a film about The Hague in 1915, local Conscientious Objector families in Manchester and rewriting in film the wartime story of Margaret Ashton. This film and the book about Crusading Women in East Lancashire forms part of an ongoing series of creative approaches to WW1 and storytelling.

Dr Ronan will introduce this screening of their film about the Women's Peace Crusade in East Lancashire in 1917-1918, which features archive footage and contemporary scenes in Blackburn, Manchester and Nelson.

There will be a short talk about the Crusade, a chance to handle archive material and to learn more about the project. The booklet detailing the volunteer-led research and highlighting the radical women in each town, will be on sale.



"Crusading Women in Manchester and East Lancashire" by Emily Johns (2017)

Organised by Dr Kirsty Bunting, English Subject Leader and Senior Lecturer at Manchester Met Cheshire Campus.



"Art Is Everywhere" by Anne-Louise Kershaw (2013)

Saturday 24 March

Feminism and Museums

2.00pm-4.00pm

**The Coal Store
People's History Museum**

Left Bank
Spinningfields
Manchester
M3 3ER

Free – See RAH! website for tickets

Join us in-conversation with Dr Jenna C. Ashton, discussing the content and motivations behind her two-volume edited collection "Feminism and Museums: Intervention, Disruption and Change" (MuseumsEtc, 2017&18), in the context of national centenary celebrations around women's suffrage.

In two volumes (each 600+ pages), *Feminism and Museums* explores how museums are responding to the wider socio-political challenges faced by women and girl globally, in which they too play a part.

In over 50 chapters, creative resistance by both high-profile galleries and grassroots activist collectives is presented, and issues of colour, disability, domestic abuse, indigenous rights, labour, land use, migration, pornography, rape, refugees, sexuality, sex-work, technology and work examined.

Feminism and Museums creates a space of creativity, conversation and confidence, of dialogue and new knowledge, building on the ambitious practice and perseverance of museum workers worldwide, and bringing together new voices, contexts and methodologies to both inform and inspire.

www.jcashton.com

🐦 @dwarchivenorth

In association with Wonder Women Festival 2018 and the People's History Museum.





Supported using public funding by
**ARTS COUNCIL
ENGLAND**

Arts&Heritage



Arts & Humanities
Research Council



**UNIVERSITY OF
BIRMINGHAM**



University of
Chester



 **International Women's Day**

**MANCHESTER
SCHOOL OF ART**

**MUSEUM FÜR PHOTOGRAPHIE
BRAUNSCHWEIG**



Join the conversation on social media:



@mmu_rah



@facebook.com/manmet.rah



@mmu_rah